

CALENDAR AND DIRECTORY

THE CITY SCHOOL DISTRICT OF NEW ROCHELLE 2009-2010

• New Rochelle High School • Albert Leonard Middle School • Isaac E. Young

2009

2010



Trinity Elementary School • William B. Ward Elementary School • Daniel Webster Elementary School

Middle School • Barnard Early Childhood Center • Columbus Elementary School

• George M. Davis Jr. Elementary School • Jefferson Elementary School •

Greetings and a Welcome to the 2009-10 school year

On behalf of the New Rochelle Board of Education, the District's administration, faculty and staff it gives me great pleasure to welcome you to the 2009-10 school year.

If you've glanced at a calendar you may have noted that we are approaching the conclusion of the first decade of the 21st Century. How remote our concerns about Y2K seem today. As a nation we've celebrated many significant achievements and survived more than our fair share of difficulties in the last ten years. It is clear that we have shown our desire and will to overcome and succeed.

For the New Rochelle School District, the future continues to look bright. After many years of research and planning, we will launch our District-wide Full Day Kindergarten program at all elementary schools. Reaching this milestone has been a testament to the hard work of many concerned staff, parents and community members who have helped to bring it to fruition.

Our commitment to build upon the unique diversity of our City leads us to a further exciting addition to our Foreign Language offerings, namely the introduction of Chinese language instruction. In addition to our existing offerings in Spanish, French and Italian and an expanded Latin program at the secondary level, we will take delight in offering our students enhanced exposure to World Languages which will help prepare them for a place in our global economy.

As a companion to our Foreign Language expansion at the middle school level this will be the second year of Italian language instruction for students in Kindergarten and First grade at Jefferson Elementary School. This outgrowth of our highly successful CILA/SILA Dual Language program continues to generate interest from school districts around the country.

The number of students who have opted to take challenging Advanced Placement classes continues to grow with noticeable increases in the number of minority students now enrolling. Our Science programs have been featured in national media with our Forensics program being the subject of a significant article in The New York Times last Spring.

Perhaps most indicative of our overall success was the announcement that every school in our District, i.e., elementary, middle and high school was determined to be "In Good Standing" by the New York State Education Department, an accomplishment reached by only a handful of small cities throughout the State. It is no surprise that Business Week magazine identified New Rochelle as "the best place to raise children in New York State in 2009".

As we embark upon the second decade of the 21st Century, I am sure that we will have our share of successful stories and continued challenges. For our school system the quest to have all students achieving high standards in literacy and mathematics remains a consistent goal. It is however reassuring to know that the entire New Rochelle community takes pride in their schools and continues to support them even in difficult economic times. In return for that reassurance, we, the School District, will work even harder to insure that we bring true value to the investment in our children.

Working together, I am sure that we will realize great things for our District

Sincerely,
Richard E. Organisciak
Superintendent of Schools



BOARD OF EDUCATION

Sara M. Richmond
President

Chrisanne M. Petrone
Vice-President

Cindy Babcock Deutsch
Jeffrey Hastie
David Lacher
Deirdre Polow
Mary Jane Reddington
Jerome Smith
Quay Watkins

CENTRAL ADMINISTRATION

Richard E. Organisciak, *Superintendent of Schools*
Jeffrey Korostoff, Ed.D., *Assistant Superintendent - Curriculum & Instruction*
Diane Massimo, Ph.D., *Assistant Superintendent - Instructional Support Services*
Margaret Pecunia, *Assistant Superintendent - Human Resources*
John B. Quinn, *Assistant Superintendent - Business and Administration*
Lisdalia Saraiva, *Clerk & Secretary*
Carol Amorello, *Treasurer*
Maggie MacNichol-Skau, *Public Information Officer*
Christine Coleman, *Director of Technology*
TBA, *Director of Pupil Services*
John Gallagher, *Director of Environmental Services*
Yvette Goorevitch, *Director of Special and Alternative Education*
Adrienne Weiss-Harrison, M.D., F.A.A.P., *Medical Director/School Physician*
Elena Dilion, *Supervisor, English Language Learners*



CALENDAR AND DIRECTORY

OF THE CITY SCHOOL DISTRICT OF NEW ROCHELLE 2009-2010

Award Winning School District
Elementary - Secondary School Recognition Program
United States Department of Education · New York State Department of Education

BOARD OF EDUCATION MEETINGS

The Board's regular monthly meetings held in public are generally scheduled on the first Tuesday of each month at 8:00 p.m. at school district offices, second floor, City Hall. These meetings are preceded by a Committee of the Whole session (c.o.w.) at 7:00 p.m. A second Committee of the Whole session is held the last Tuesday of each month at 7:00 p.m. Parents and residents are invited to attend all meetings, especially those held the first Tuesday which often feature presentations of educational programs. Meetings are listed in the calendar and announced in the local media.

COMMUNICATIONS WITH THE BOARD

The Board provides time at its regular monthly meetings for the public to be heard. Speakers may be included on the Board's printed agenda by contacting the Clerk and Secretary (576-4219) at least one day prior to the Board's meeting. All other persons attending the meeting who wish to address the Board may be permitted to do so. Persons making a request to speak should indicate the organization they represent and the topic. Speakers will be called upon in the order that their request is made. Additionally, the Board may set aside a time slot during the Committee of the Whole session held in public on the last Tuesday of the month for an informal discussion with members of the public.

Residents who wish to communicate with the Board by letter may address their communication to the President, Board of Education, 515 North Avenue, New Rochelle, NY 10801. Questions concerning administrative matters or individual students should not be directed to the Board until the appropriate staff members or administrators have first been contacted. In cases of questions or problems concerning a student, parents should first contact the teacher or guidance counselor, then the principal, and then, if necessary, the Superintendent of Schools or his staff. If after these contacts, questions still remain, the matter may then be brought to the attention of the Board of Education. Experience has shown that most problems can be resolved with the least delay if the staff member nearest the problem is approached first.

2009-2010 SCHOOL DATES*

- Sept. 8 General Staff Orientation (Tues.)
- Sept. 9 Schools Open (Wed.)
- Sept 28 Schools & Offices Closed (Yom Kippur) (Thurs.)
- Oct. 12 Schools & Offices Closed-Columbus Day (Mon.)
- Nov. 3 Superintendent's Conference Day (Students do not attend)
- Nov. 11 Schools & Offices Closed - Veteran's Day (Wed.)
- Nov. 25-27 Schools & Offices Closed-Thanksgiving (Wed.,Thurs.,Fri.)
- Dec. 24-31 Recess-Schools Closed (Offices 12/24,12/25, 12/31)
- Jan. 1 Schools & Offices Closed - New Year's Holiday
- Jan. 4 Schools Reopen (Mon.)
- Jan. 18 Schools & Offices Closed - Dr. Martin Luther King Jr. Birthday Observance (Mon.)
- Feb. 15-19 Schools Closed - Recess (Mon.-Fri.) (Offices 2/15, 2/16)
- Mar.29-Apr.2 Schools Closed - Recess (Offices 4/1, 4/2)
- May 28** Weather makeup day #2 (Fri.)
- May 31 Schools Closed & Offices Closed - Memorial Day (Mon.)
- June 1** Weather make-up day #1 (Tues.)
- June 25 Last Day of School (Fri.)

*(Calendar subject to change)

**New York State requires a minimum 180-day calendar. If schools must be closed more than two days due to inclement weather or other emergency, school will be held for a full day on June 1, a "makeup" day. If an additional day is needed, May 28 will be used.

Parents who have any questions concerning days of religious observance should contact their principals.

The following Wednesdays are scheduled half-days for elementary schools for parent teacher conferences or curriculum development. In addition, middle schools and the high school have three half days scheduled:

- September 9 Curriculum Development (Elem.)(No Kindergarten)
- September 10 Half-Day for Kindergarten only
- September 30 Curriculum Development (A.M. Pre-K)
- October 14 Curriculum Development (P.M. Pre-K)(Secondary)
- October 28 Curriculum Development (A.M. Pre-K)
- December 2 Parent Conference/Curric. Dev. (P.M. Pre-K)(Secondary)
- December 9 Parent Conference (A.M. Pre-K)
- March 10 Parent Conference/Curric. Dev. (P.M. Pre-K)(Secondary)
- June 23 Clerical Day (A.M. Pre-K)
- June 24 Clerical Day (P.M. Pre-K)
- June 25 Promotion Day (A.M. & P.M. Pre-K)

The evening of December 3 is reserved for teacher-parent conferences.

SCHOOL HOURS

Elementary Schools: 8:27 a.m. first bell;
8:45-11:40 first session;
12:40-3:15 second session
Middle Schools: warning bells: ALMS 8:35; IEYMS 8:15
end of day ALMS 2:40; IEYMS 2:25
High School: warning bell 8:10; end of day 3:08

EMERGENCY CLOSINGS & ANNOUNCEMENTS

If schools must be closed due to bad weather or other emergencies, or if significant transportation delays are experienced, announcements will be made over the following local media: Internet- District and school web pages: www.NRED.ORG; www.cancellations.com, www.7online.com, on cable TV **CABLE 77/30**, and radio - **WFAS** - 103.9 FM & 1230 AM, **WVOX** - 1460 AM, **WRTN** - 93.5 FM. If there is no announcement, schools are open. If schools are closed, they are closed for all other scheduled activities, including after school programs, athletics, Continuing Education classes and evening programs.

This school district's basic transportation service limits the district's capability to provide for weather-related delayed school opening and early school closing. Schools are either open or closed for the day. As a decision is made, our primary concern is the safety of the children. Transportation service for eligible students in grades 6 to 12 is provided by Westchester County Liberty Lines. Busses that transport students to and from Albert Leonard Middle School, Isaac E. Young Middle School and New Rochelle High School also serve established county commuter runs that Westchester County Liberty Lines cannot alter. It is not feasible to have a delayed opening or early closing that has not been planned well in advance for one division of our school system and not the other. Since child care needs and road conditions in a city that is approximately 10-miles long and four-miles wide with over 165 miles of roads can vary greatly, the district advises parents to assess the conditions in their own neighborhood as they make decisions as to whether or not to send their child to school.

Because the District may need to notify you by phone in an emergency, **please provide your child's school with any change in telephone number** or contact information.

SCHOOL WEB SITES & TEACHER PAGES

The City School District of New Rochelle utilizes eChalk, an Internet-based system, to provide school web communication for faculty, staff, students, parents and the community. You can navigate to all of our school web pages from the Directory Listing found on the top left on each school home page. A new function enables parents to first subscribe to their child's teacher class page and then receive notice when the teacher posts updates, such as assignments. Using the eChalk Internet-based system, teachers may choose to post current announcements, homework and project assignments, test and quiz dates, etc. Automatic notices are sent when announcements and events are updated by subscribing to the automatic RSS feeds (orange icons) on all of our school home pages. Many district resources are posted to school web sites. School closing announcements, and Board of Education meeting agenda are also posted <http://www.nred.org>.

SCHOOLS AND PRINCIPALS 2008-2009

New Rochelle High School (Grades 9-12)
265 Clove Road, 10801-1247
576-4500 (FAX 576-4284) Web Site: nrhs.nred.org
Donald T. Conetta, Principal
Joseph Starvaggi, Assistant Principal
Gustavo Barbosa, House Principal
Vera Cheek, House Principal
Dara Monifa Tippitt, House Principal
TBA, House Principal
Michael Kenny, District Coordinator, Guidance & Counseling
Maureen Maire, Director of Continuing Education and Extended Day School Program (576-4548)

Campus Alternative High School (Grades 9-12)
50 Washington Avenue, 10801
Joel Fridovich, Program Administrator
576-4393 (Fax 576-4647) Web Site: nrhs.nred.org

Albert Leonard Middle School (Grades 6,7,8)
25 Gerada Lane, 10804-3399
576-4339 (FAX 576-4784) Web Site: albertleonard.nred.org
William Evans, Principal
Velma Whiteside, Assistant Principal

Isaac E. Young Middle School (Grades 6,7,8)
270 Centre Avenue, 10805-2498
576-4360 (FAX 632-2738) Web Site: isaacyoung.nred.org
Anthony Bongo, Principal
Tawanda G. Robinson, Assistant Principal

Henry Barnard School (Grades PreK-2)
129 Barnard Road, 10801-1301
576-4386 (FAX 576-4625) Web Site: barnard.nred.org
Patricia Lambert, Principal
Lori E. Pisani, Ph.D., Assistant Principal

Columbus Elementary School (K-5)
275 Washington Avenue, 10801-5999
576-4401 (FAX 576-4628) Web Site: columbus.nred.org
Yigal Joseph, Principal
Sonia Nunez, Assistant Principal

George M. Davis, Jr. Elementary School (K-5)
80 Iselin Drive, 10804-1099
576-4420 (FAX 576-4225) Web Site: davis.nred.org
William Harrell, Principal
Paula Cohen, Assistant Principal

Jefferson Elementary School (K-5)
131 Weyman Avenue, 10805-1428
576-4430 (FAX 576-4631) Web Site: jefferson.nred.org
Cynthia Slotkin, Principal
Kimmerly Nieves, Assistant Principal

Trinity Elementary School (K-5)
180 Pelham Road, 10805-3197
576-4440 (FAX 576-4266) Web Site: trinity.nred.org
Rolando Briceño, Principal
Nadine Pacheco, Assistant Principal
TBA, Administrative Assistant (576-4239)

William B. Ward Elementary School (K-5)
311 Broadfield Road, 10804-2499
576-4450 (FAX 576-4263) Web Site: ward.nred.org
Kenneth M. Regan, Principal
John Fogliano, Assistant Principal (576-4452)
Cynthia Barr-Pfeffer, Administrative Assistant (576-4392)

Daniel Webster Magnet School (K-5)
95 Glenmore Drive, 10801-3199
576-4460 (FAX 576-4479) Web Site: webster.nred.org
Joseph Williams, Principal
Melissa Passarelli, Assistant Principal



September 2009

CITY SCHOOL DISTRICT OF NEW ROCHELLE • AN AWARD WINNING SCHOOL DISTRICT • WWW.NRED.ORG

Sunday Monday Tuesday Wednesday Thursday Friday Saturday

		1	2	3	4	5
						
6	7 <i>(Schools & Offices Closed)</i> <i>(Labor Day)</i> <i>International Literacy Day</i>	8 Superintendent's Conference Day - Staff Orientation SRC Mini-Grant Showcase Board of Ed C.O.W. 7pm Regular Monthly Meeting 8pm <i>(International Literacy Day)</i>	9 ELEMENTARY HALF-DAY (No Kindergarten) SCHOOLS OPEN Webster Welcome Coffee 8:30am ALMS PTA Tailgate NRHS Grade 9 Only	10 Full Day - All Schools Kindergarten First Day: Half-Day for Kindergarten Only Trinity Welcome Back Breakfast 8:30am Ward New Parent Coffee with Principal 10am NRHS Gr 9 & 10 Only	11 Kindergarten Full Day Ward Welcome BBQ 5:30pm NRHS All Grades IEYMS PTA Welcome Gr6 Ice Cream Social 6:30pm <i>(Patriot Day)</i>	12 ACT NRHS Football vs. Mt Vernon - away
13 <i>(Grandparents' Day)</i>	14 Davis Meet the Teacher Night GrK,1,2 7:30pm/ PTA Fall Fundraiser begins Trinity Meet the Teacher Night GrK,1,2, Kaleidoscope 4 7pm Ward Meet the Teacher GrK,1,2 7pm/ Gift Wrap Drive to 9/18 Webster Wrap Sale Begins Extended Day School Registration through 9/18 MAC art exhibit to 10/30 Adult Ed Registration to 10/9	15 Barnard PTA 7pm Columbus PTA 7pm Davis Meet the Teacher Night Gr 3,4,5 7:30pm Jefferson Meet the Teacher K-2 7pm Trinity Meet the Teacher Night Gr3,4,5, Kaleidoscope 5 7pm Ward Meet the Teacher Gr3,4,5 - 7pm/ Ward Pictures Webster Gala Gallery Opening/ PTA Exec Board 7:30pm ALMS Gr8 & Faculty Pictures	16 Barnard Pre-K Transition Days to 9/18 Jefferson Meet the Teacher Gr3-5 7pm Ward Pictures ALMS Gr7 Pictures/ Meet the Teacher Night 7pm / PTA Membership Drive IEYMS Meet the Teacher 6:30pm <i>(Mexico Independence Day)</i>	17 Barnard K-2 Meet the Teacher 7pm Webster Studio Arts Planning Day 1 ALMS Gr6 Pictures <i>(Constitution Day)</i>	18 Columbus New Parent Coffee with Principal 9:15am Davis New Parent Welcome Coffee 9:15 am Jefferson New Parent Welcome Coffee w/ Principal 9am Ward Peace Day Webster Studio Arts Planning Day 2 IEYMS House II Glen Island NRHS Football 3pm home <i>(Rosh Hashanah begins at sunset)</i>	19 <i>(Rosh Hashanah first day)</i> <i>(Ramadan ends)</i> <i>(German-American Day)</i>
20 <i>(Rosh Hashanah second day)</i>	21 Barnard PTA Gift Wrap Drive Columbus Peace Day/ Meet the Teacher Gr3,4,5 7pm Trinity PTA Fall Fundraiser to 10/2 / Trinity Parent Math Workshop Gr 4&5 7pm Webster K Studio Planning day IEYMS PTA Fundraiser to 10/9 Extended Day School begins <i>(Peace One Day .org)</i>	22 Columbus Meet the Teacher Gr K,1,2 - 7pm Trinity 21st Century Orientation 3:30-4:30 Webster Meet the Teacher Gr K,1,2 & Kaleidoscope 7pm ALMS Magazine Drive Kickoff <i>(Autumn Begins)</i> Adult Ed Registration to 10/9	23 Webster Meet the Teacher Gr 3,4,5 FLAMPEL & Specialists 7pm PTA Council 7:30pm SEPTA 7:30pm SRC Policy Board Meeting	24 Trinity Kindergarten Family Literacy 6:30pm NRHS Meet the Teacher 7pm	25 Davis Back to School Picnic 5-7pm	26 NRHS Football vs Lincoln - home Jefferson PTA Tag Sale 10-4
27 <i>(Yom Kippur begins at sunset)</i>	28 Schools and Offices Closed <i>(Yom Kippur)</i>	29 Columbus PTA Gift Wrap Sales through 10/14 Trinity 21st Century After-school Program Begins / Book Fair to 10/1 Adult Ed Registration to 10/9 Board of Education C.O.W. @ Jefferson 7pm	30 ELEMENTARY HALF-DAY No Afternoon Pre-K IEYMS PTA 7:30pm NR Fund sponsors PSAT Practice Test for NRHS Juniors	<p><i>(Hispanic Heritage Month 9/15-10/15, PTA Membership Month)</i></p> <p>Legend: C.O.W. = Committee of the Whole DPAC = District-Wide Parents Advisory Council FUSE = Federation of United School Employees MAC = Museum of Arts & Culture NR Fund = New Rochelle Fund for Educational Excellence SRC = Staff Resource Center / = separates different events () = holidays in parenthesis for information only ** = weather make-up day * = designated religious observance - No testing or introduction of new material red - indicates changes from printed version</p>		

ABOUT THE NEW ROCHELLE SCHOOLS

New Rochelle's award-winning public school system offers a comprehensive educational program for its nearly 11,000 students. Each school provides an intellectual and social environment sensitive to the student's needs. At all levels, alternatives and options are available to accommodate a wide range of factors: student needs and interests, various and preferred learning styles and parental desires. Variety, flexibility, and choice are crucial components of a New Rochelle education.

A challenging and responsive K-12 curriculum, favorable class sizes and a dedicated and knowledgeable faculty with high expectations enable students to gain the knowledge, confidence, and experience necessary for success.

Guidance counselors, speech/language specialists, social workers, psychologists, teachers for the learning disabled, and reading teachers are part of a broad range of support services by educational specialists which focus on the individual needs of a diverse student body. A multifaceted Special Education program is also available.

MISSION STATEMENT

The mission of the New Rochelle School System, acknowledging its richly complex history, is to produce responsible, self-sufficient citizens who possess the self-esteem, initiative, skills, and wisdom to continue individual growth, pursue knowledge, develop aesthetic sensibilities, and value cultural diversity by providing intellectually challenging educational programs that celebrate change but affirm tradition and promote excellence through an active partnership with the community, a comprehensive and responsive curriculum, and a dedicated and knowledgeable staff.

REGISTRATION OF NEW STUDENTS

Parents seeking to register children should call the school's main office for an appointment. At the time of registration, parents present: three (3) proofs of residency, such as utility bills, mortgage statement, or other bills received by mail; proof of the student's age, such as birth or baptismal certificate; immunization records; transcripts from previous schools, and the most recent report card. For students residing with other than a parent or court-appointed legal guardian, or in cases where parents do not have required proof of residency, enrollment must be arranged through the Department of Pupil Services. Please call 576-4274 for information.

Registration is scheduled in elementary schools every morning during the last week of August. Secondary schools will register students mornings until Noon throughout August. Appointments are necessary. Call the middle schools or high school in advance.

Kindergarten students may be registered at neighborhood schools during scheduled registration dates announced each Spring. Children who will be five years old on or before December 31 are eligible to attend kindergarten in September.

When registering, students residing in the Lincoln District will be assigned a school by the Superintendent of Schools.

Parents/guardians should bring their children to the school when seeking registration.

PRE-KINDERGARTEN PROGRAMS

Recognizing the importance of the early years as crucial for laying the foundation for the physical, intellectual, social and emotional development of young children, the district provides space for a limited number of four-year-olds at the Barnard School for the N.Y.S. Pre-Kindergarten program and the Early Childhood Magnet Program. The pre-kindergarten programs help the young child with a comfortable, secure and inviting transition from home to school. Both programs provide developmentally appropriate opportunities to promote each child's natural abilities, interests and enthusiasm for learning. Active parent involvement is encouraged in all aspects. Applications for the New York State Program are available by contacting the Main Office at Barnard at 576-4386. Applications for the EC² magnet program are available at the open house event in March.

ELEMENTARY EDUCATION

A strong academic program not only stresses mastery of basic skills — reading, writing and mathematics — but includes a comprehensive social studies program and an in-depth inquiry-based science program. An early comprehensive district-wide testing program assists the staff to determine students' strengths and weaknesses, and to develop appropriate programs to meet each child's needs.

Well qualified and experienced teachers work with children in classroom settings and other supportive environments in each of the district's seven elementary schools to meet student's individual needs. Additional services are also provided by librarians, reading specialists, learning disabilities specialists, speech and language pathologists, teachers of art, music, physical education, English-as-a-Second Language and enrichment programs. Appropriate academic intervention services (AIS) and response to intervention (RtI) approaches are designed by each elementary school.

MUSIC AND ART

A comprehensive music program provides children a rich experience in classroom, choral and instrumental music from K to 12. Academic and advanced placement courses are also available. A comprehensive art education program provides children a rich experience in the fine arts. Resident musicians complement the music education program. In addition, an annual art exhibit at the New Rochelle Public Library in the spring, called "Our Children, Our Artists," is a district-wide celebration of the fine arts. The PAVE (Performing And Visual Arts Education) Program affords those students who want to major in the Performing Arts an opportunity to do so at the high school level. Students audition to enter the PAVE Program. New Rochelle was named among the "Best 100 Communities for Music Education in America" in 2005. Students from New Rochelle High School performed at Carnegie Hall in 2007.

INSTRUCTIONAL TECHNOLOGY

The over-arching vision of the district's Instructional Technology Initiative is to integrate technology into the curriculum, instruction, professional development and information management to improve the scope and quality of the educational program. Each school is equipped with computer lab(s), wireless laptop cart(s), SMART Board interactive technology, and high speed fiber connections to the Internet. Several school locations are equipped with videoconferencing.

Technology is integrated as learning tools to help children in every curricular area and to motivate lifelong learning. Many of our instructional software tools are available to students and faculty from the Internet. Problem solving, research skills, mathematics, language arts, keyboarding, word processing, desktop publishing, computer graphics, engineering Auto CAD, Leggo robotics, digital photography, digital video production, probeware, assistive technology and Web 2.0 tools are introduced in elementary schools and extended in the secondary schools. On-going professional development is provided to our faculties in each building to help to integrate the technology into the curriculum.



October 2009

Sunday Monday Tuesday Wednesday Thursday Friday Saturday

<p><i>(Italian Heritage Month, Crime Prevention Month, Computer Learning Month)</i></p>	<p>NYS Alternative Assessment for Students with Severe Disabilities through Feb. 12</p> <p>Students interested in playing Winter sports must be medically cleared/have a current sports physical exam on file with the Health Office. Students whose last sports exam was conducted after November 2008 must be examined in school or by their personal physician. All students should report to the Health Office to pick up the appropriate form (the CSD Health Appraisal form must be used and signed by parent and physician) or sign up for an in-school exam. Students whose exams are current need to complete the <u>Athletic Health History</u> update form with their parents and submit it to the Health Office in October. As the School Nurses create the medical clearance lists for coaches, all students who intend to participate in a Winter sport need to speak with their School Nurse.</p> <p><i>*Designated Religious Observance</i></p>			<p>1</p> <p>Trinity Parent Math Workshop Gr 2&3 7pm Webster Photo Day NRHS PTSA 7:30pm Adult Ed Registration to 10/9</p>	<p>2</p> <p>Trinity Title I Breakfast 9am/ Fall Fundraiser ends ALMS Magazine Drive Turn-in Day NRHS Pep Rally <i>(Sukkot begins at sunset)</i></p>	<p>3</p> <p>NRHS Football vs Scarsdale (Homecoming) Jefferson PTA Tag Sale 10-4 <i>(Sukkot first day)</i></p>
<p>4</p> <p><i>(Sukkot second day)</i> <i>(Fire Prevention Week)</i></p>	<p>5</p> <p>Davis PTA & Exec Board 7:30pm Jefferson After School Program Begins Webster Studio Arts Gr K NYS Alternate Assessments begin, to 2/12 ALMS Magazine Drive Turn-in Day Adult Ed Registration to 10/9</p>	<p>6</p> <p>Barnard PTA 7pm Columbus PTA 7pm Trinity ELL Parent Orientation 7pm/ PTA 7pm Webster Family Art 6pm / PTA Exec7pm General 7:30pm Board of Ed Regular Monthly Meeting 7pm</p>	<p>7</p> <p>Ward Class Parent Meeting 7:30pm Webster International Walk to School Day/ Lunch with Principal Gr5 ALMS Magazine Drive Turn-in Day NRFUND sponsors PSAT Review & Seminar for NRHS Juniors</p>	<p>8</p> <p>Trinity Parent Math Workshop Gr K&1 7pm Webster Studio Arts Gr1,2,3</p>	<p>9</p> <p>Barnard Principal's Tea 9:30am/Family Welcome 6:30pm Webster Studio Arts Gr4,5 IEYMS PTA Fundraiser ends NRHS Football vs White Plains (away) 7pm **15-Minute Drill Early Dismissal All Schools</p>	<p>10</p> <p>SAT <i>(Shmini Atzeret)</i></p>
<p>11</p> <p><i>(Simchat Torah)</i></p>	<p>12</p> <p>Schools & Offices Closed <i>(Columbus Day)</i> <i>(National School Lunch Week)</i> NRHS Cheer Clinic 9am</p>	<p>13</p> <p>Jefferson PTA 7pm Trinity PTA 7pm Webster Family Art 6pm/ Gala Gallery Opening Adult Ed Classes Begin</p>	<p>14</p> <p>HALF-DAY - ALL SCHOOLS: Elem., Middle & High Schools No Morning Pre-K</p>	<p>15</p> <p>Barnard Pre-K Meet the Teacher 6:30pm Webster Studio Arts Gr1,2,3 NRHS Hispanic Parents Night 7:30pm</p>	<p>16</p> <p>Columbus Coffee with Principal 9:15am/ PTA Movie Night 7pm Ward Pumpkin Sale Webster Studio Arts Gr4,5 / Gift Wrap Sale ends/ Family Dance Night 6:30pm</p>	<p>17</p> <p>ACT PSAT NRHS Football Playoffs (TBA) MAC Arts Fest reception @NRHS</p>
<p>18</p> <p>MAC Arts Fest</p>	<p>19</p> <p>TCS testing Grade 3 through 10/23 Columbus PTA Book Fair through 10/23 Webster Studio Arts Gr K IEYMS Gr8 Cap & Gown Picture Day <i>(National School Bus Safety Week - www.napt.org)</i></p>	<p>20</p> <p>Davis Pictures Webster Family Art 6pm IEYMS Gr7 Picture Day <i>(Shmini Atzeret)</i></p>	<p>21</p> <p>Davis Pictures Trinity ELA Info Night Parents 3,4,5 7pm Ward PTA 7:30pm Webster Coffee with the Principal 9am ALMS Principal's Luncheon/ PTA 7pm IEYMS Gr6 Picture Day/ PTA 7:30pm SRC Policy Board NRFUND SAT Prep Course Student/Parent Info 7:30pm @NRHS WCMSA All-State HS rehearsal @WPHS 4-9PM</p>	<p>22</p> <p>Trinity Title I Gr1 Family Literacy Webster Studio Arts Gr1,2,3 SEPTA 7:30pm PTA Council 7:30pm</p>	<p>23</p> <p>Columbus Halloween/ Day of the Dead 6pm Webster Studio Arts Gr4,5 ALMS Picture Make-Up Day NR Fund Rubie Saunders Literary Festival <i>(United Nations Day)</i></p>	<p>24</p> <p>ACT NRHS Football Playoffs (TBA) Barnard Pumpkin Patch @Noon <i>(Make a Difference Day)</i></p>
<p>25</p>	<p>26</p> <p>Columbus Photo Day Webster Studio Arts Gr K</p>	<p>27</p> <p>Davis Pictures Jefferson Picture Day Board of Ed C.O.W. Meeting @Barnard 7pm</p>	<p>28</p> <p>ELEMENTARY HALF-DAY No Afternoon Pre-K</p> <p>MAC "Silents Are Golden" 100th Anniversary</p>	<p>29</p> <p>Jefferson Mathematics Information Meeting K,1,2 9am/ Coffee with the Principal 9am</p>	<p>30</p> <p>Halloween Events: Barnard Dance 6:30pm Davis K Parade; Party 7pm Jefferson Party 7pm Trinity K-2 Parade/ Fall Festival 7pm Ward Party K-2 6pm/ 3-5 7-9pm Webster Parade & Alternative Activities ALMS Party - 9th period IEYMS Dance</p>	<p>31</p> <p><i>(Halloween)</i></p>

MAGNET SCHOOLS

MAGNET APPLICATION

Parents interested in applying for admission to the Barnard Early Childhood Center (EC²) must apply by 5pm FEBRUARY 5. Applications for the Columbus Science, Math, Technology Magnet (C=SMT) or the Daniel Webster Humanities Magnet are due by 5pm MARCH 26, 2010. Applications are available at each of the Magnet Open House programs - Barnard Early Childhood Center on JANUARY 21, Daniel Webster Elementary on MARCH 9, and Columbus Elementary on MARCH 4. All applications should be delivered to the Magnet Office at City Hall. Available magnet spaces will be assigned by lottery. Applicants are invited to the public drawing which is held in the Board of Education meeting room at City Hall. Parents should also register their kindergarten in their respective neighborhood school.

TRINITY COMMUNICATION ARTS & TECHNOLOGY MAGNET (TESCAT)

TESCAT is a neighborhood magnet school that is open to all students in the Trinity attendance area. Students learn a multitude of communication skills through the TESCAT magnet theme areas. They plan and produce daily news broadcasts in the digital TV Studio. Students publish a newspaper, books, and a literary magazine in the Publishing Center. Artists-in-Residence coach students on dramatic presentations of social studies themes through the Creative Arts Studio. TESCAT also features an outstanding orchestra and 100-member marching band in the Music Conservatory. A Computer Network/Distance Learning Center is used to develop students' technology skills for now and the future. TESCAT is a learning community that strives for the success of all students by focusing on meaningful learning experiences in an environment that appreciates cultural diversity and nurtures respectful, responsible citizens.

EARLY CHILDHOOD CENTER (EC²)

EC², a dynamic and challenging primary magnet program, offers a four-year sequence for youngsters from pre-kindergarten to second grade. It provides a curriculum adapted from the internationally recognized Reggio Emilia method of instruction with a strong emphasis on language development and literacy. The project-based curriculum incorporates themes which integrate creative problem solving and higher order thinking skills while simultaneously addressing primary curriculum instruction in an aesthetically pleasing environment.

COLUMBUS SCIENCE MATH TECHNOLOGY MAGNET

The Magnet Program at the Columbus School provides a challenging curriculum with emphasis on Science, Math and Technology. School activities, as well as after-school programs such as our nationally competitive Chess Club, are organized to demonstrate that all students can meet and exceed the highest standards of excellence. The Columbus Magnet School ensures that classroom and school-wide activities meaningfully engage and excite students, while also involving parents in their children's education. In addition to child-centered, hands-on science and math projects, Columbus emphasizes frequent use of technology both in the classroom and in computer labs. Special facilities include the Global Learning Center, a fully equipped Science Lab, a Greenhouse and Nature Study Pond, the Library Media Center and Computer Labs. Partnerships include area colleges and universities such as Iona, Pace and CNR, the Hudson River Museum, the American Museum of Natural History, NY Botanical Gardens, City College's Math in the City Program, the YMCA Greenkill Environmental Center, the 24 Game Metropolitan Competition by Suntex International Corp., and the National Science Teachers Association.

DANIEL WEBSTER HUMANITIES MAGNET

The Daniel Webster Elementary School enrolls children in grades K-5. The curriculum features humanities themes that encompass such areas as jurisprudence (laws and customs) philosophy (logical reasoning and relationships), literature, economics (interdependence), and sociology (self, family, neighborhood). Foreign languages (French and Spanish), Studio Arts and Talents Unlimited, a program that sparks creativity and sets the basis for critical thinking, are integrated into the program at Webster school.

KALEIDOSCOPE

Kaleidoscope is a language arts and mathematics program for all 4th and 5th grade students. Kaleidoscope provides unique cultural activities. Students participate in the regular classroom program or are selected for either the Modified Kaleidoscope program at each elementary school, or the full-time Kaleidoscope program at the Daniel Webster Elementary School which also includes science and social studies. Selection is based on test criteria, creativity ratings and a writing portfolio. Students who are eligible for the full-time Kaleidoscope program are selected by lottery.

SPECIAL PROGRAMS

Special programs include a pre-kindergarten program; a K-12 computer education program with computer labs in all schools; a modified Kaleidoscope program in each building; a full-time district-wide Kaleidoscope program in the Davis Elementary School; a unique space science curriculum featuring demonstrations in the New Rochelle High School planetarium; English-as-a-Second Language which enrolls children from more than 20 countries; an Arts-in-Education program: programs which reflect the school district's traditional commitment to expand learning horizons and to broaden educational perspectives. In addition, all elementary schools feature a unique thematic component as an overlay to the District's common core curriculum.

INTERNATIONAL LANGUAGE ACADEMIES

With start-up funds received from both federal and state sources, the Children's International Language Academy (CILA) is housed at Columbus, Jefferson, Trinity and Ward Schools; its secondary component, the Students' International Language Academy (SILA) now extends into Albert Leonard Middle School, Isaac Young Middle School and New Rochelle High School. Programs are offered in Spanish and English at seven sites, and Italian and English at Jefferson School. Students are eligible to enter these dual language programs in Kindergarten and then continue through the grades. The students receive the elementary school core curriculum in two languages. Selection is based on an initial assessment of native language fluency and parent interest. The goal of these programs is to develop students who emerge as both bilingual and bi-literate.

PROGRAMS FOR ENGLISH LANGUAGE LEARNERS

To help students who arrive from many nations achieve academically, the district provides English language instruction in grades K-12. Our goal is to help students achieve English proficiency and academic excellence. In addition, many students participate in dual language learning experiences to help them master languages as well as district and state standards. We encourage students to maintain and value their cultural and linguistic heritage, and to develop their multiculturalism and multilingualism to be prepared for a global society.

THE 21ST CENTURY COMMUNITY LEARNING CENTERS

The school district provides a variety of enrichment experiences, and recreational activities after school and during the summer for children in specific elementary and middle schools through the 21st Century Program, which provides comprehensive academic support in collaboration with the New Rochelle YMCA, Boys and Girls Club, Iona College and other community based organizations. The 21st Century Program is made possible with Federal grant funding. Additional components include a nutritious meal for all participants and parent workshops.

PARENT OUTREACH PROGRAMS

Each of our elementary schools offers extensive parent outreach programs, including Family Math, Family Science, Family Computer Literacy, Family Art and parenting sessions. Parents and their children are invited to participate in evening activities that give an understanding of the curriculum and provide suggestions for extending learning into the home.



November 2009

CITY SCHOOL DISTRICT OF NEW ROCHELLE • AN AWARD WINNING SCHOOL DISTRICT • WWW.NRED.ORG

Sunday Monday Tuesday Wednesday Thursday Friday Saturday

<p>1 </p> <p>Daylight Savings Time Ends - Clocks Fall Back 1 hour <i>(All Saints Day)</i></p>	<p>2</p> <p>Webster Studio Arts GrK / PTA Exec Brd 7:30pm Ice Hockey Practice Begins <i>(All Souls Day)</i></p>	<p>3</p> <p>Superintendent's Conference Day (Students do not attend)</p> <p><i>PTA Election Day Bake Sale: Davis, Barnard, Webster</i></p> <p>Barnard PTA 7pm</p> <p><i>(Election Day)</i></p>	<p>4</p> <p>WCSMA Area All-State HS rehearsal @ WPHS 4-9PM</p> <p>Board of Ed Regular Monthly Meeting</p>	<p>5</p> <p>Barnard Photos</p> <p>Webster Studio Arts Gr1,2,3</p> <p>NRHS PTSA 7:30pm</p> <p>WCSMA All-State HS rehearsal @SUNY Purchase 9-4, concert 8pm</p>	<p>6</p> <p>Barnard Photos</p> <p>NRHS First Marking Period Ends</p> <p>Jefferson Movie Night 6:30pm</p> <p>Webster Studio Arts Gr4,5</p>	<p>7</p> <p>SAT</p> <p>NRHS PAVE / Ajkun Ballet "Tribute to the Troops" 7:30pm</p>
<p>8</p> <p><i>(National Children's Book Week)</i></p> <p><i>(National School Psychology Awareness Week)</i></p>	<p>9</p> <p>Trinity Photos</p> <p>Webster Studio Arts Gr K</p> <p>Winter Sports Practice Begins</p>	<p>10</p> <p>Trinity Photos</p> <p>Ward PTA General 9:30am</p> <p>Webster Book Fair to 11/13/ Gala Gallery Opening</p>	<p>11</p> <p>Schools & Offices Closed</p> <p><i>(Veteran's Day)</i></p>	<p>12</p> <p>Webster Studio Arts Gr1,2,3</p> <p>PTA Council 7:30pm</p>	<p>13</p> <p>Barnard Movie Night 6:30pm</p> <p>Columbus Red Hawk Dancers</p> <p>Ward Gr3,4,5 Movie Night 7pm</p> <p>Webster Studio Arts Gr4,5</p> <p>NRHS College Art Portfolio Day</p>	<p>14</p>
<p>15</p> <p>American Education Week through 11/22 <i>(www.nea.org)</i></p>	<p>16</p> <p>Gr5 Social Studies Tests</p> <p>Barnard Book Fair to 11/20</p> <p>Davis Food Drive to 11/20</p> <p>Jefferson Book Fair to 11/20</p> <p>Webster Studio Arts GrK/ Literary Presentation 9am</p> <p>SEPTA 7:30pm</p> <p>Elementary Study Groups</p> <p>Extended Day Second Marking Period Begins</p>	<p>17</p> <p>Gr5 Social Studies Tests</p> <p>Columbus PTA 7pm</p> <p>Davis Book Fair Family Night 6:30pm/ PTA Exec Board 7:30pm/ Book Fair to 11/19</p> <p>Trinity PTA 7pm</p> <p>Webster Lunch with the Principal Gr K</p> <p>Board of Ed C.O.W. @ Columbus 7pm</p>	<p>18</p> <p>Gr5 Soc. Studies Make-ups</p> <p>Davis Thanksgiving Feasts</p> <p>Trinity Play Casting Call 3:30-6pm</p> <p>Ward Coffee with Principal K&Gr1 Parents 10am/ Gift Wrap Distribution</p> <p>ALMS Principal's Luncheon / PTA 7:30pm</p> <p>IEYMS PTA 7:30pm</p> <p>SRC Mini-Grant Committee</p>	<p>19</p> <p>Gr5 Social Studies Test Make-ups</p> <p>Barnard Story Night 6:30pm</p> <p>Jefferson Math Family Night Gr 3,4,5 6:30pm</p> <p>Trinity Gr2&3 Family Literacy Night 6:30pm</p> <p>Webster Studio Arts Gr1,2,3/ Book Cafe 6:30pm</p>	<p>20</p> <p>Gr5 Social Studies Test Make-ups</p> <p>Barnard No Pre-K / Staff Development</p> <p>Columbus PTA Movie Night 7pm</p> <p>Webster Studio Arts Gr4,5</p>	<p>21</p> <p>NR Fund- Annual Pancake-Breakfast @NRHS Cancelled</p>
<p>22</p>	<p>23</p> <p>Trinity Band Jacket Distribution</p> <p>Webster Studio Arts Gr K</p> <p>Winter Modified Sports Begin</p>	<p>24</p> <p>Board of Ed C.O.W. @ Columbus 7pm Cancelled</p>	<p>25</p> <p>City of New Rochelle Thanksgiving Parade</p> <p>Trinity Marching Band</p>	<p>26</p> <p>Schools & Offices Closed</p> <p><i>(Thanksgiving)</i></p>	<p>27</p> <p><i>(Eid al-Adha)</i></p>	<p>28</p>
<p>29</p>	<p>30</p> <p>Webster Studio Arts Kindergarten Festival</p>	<div style="display: flex; justify-content: space-around; align-items: center;">   </div> <p><i>(American Indian Heritage Month, Good Nutrition Month, PTA National Healthy Lifestyles Month)</i></p>				



THE MIDDLE SCHOOLS

The Albert Leonard Middle School and Isaac E. Young Middle School promote active engagement in learning in which students pursue tasks with clearly defined expectations. Each middle school is organized into clusters of 100 to 125 students assigned to core academic teachers and a common counselor for grades six and seven. In addition to reading and writing, research and thinking skills are stressed throughout the middle school program. Guidance counselors work with students on appropriate placement and program, preparation for high school, and career exploration and awareness.

Four foreign languages are offered. Qualified students may pursue accelerated programs and take advanced high school work in mathematics, science and foreign language. Strong performing music programs offer choir, band, or orchestra instruction. Full home and career, technology, art and physical education programs complete the curricular offerings. Students take advantage of publishing opportunities by producing award-winning newsletters, yearbook and literary magazines. Extra-curricular and co-curricular activities and sports are an integral part of student experiences, including intramural sports programs.

GEAR-UP: GAINING EARLY AWARENESS AND READINESS FOR UNDERGRADUATE PROGRAMS

To increase the number of students who are prepared to enter and succeed in postsecondary education, the New York State Department of Higher Education Services Corporation (HESC) has renewed a six-year Gaining Early Awareness and Readiness for Undergraduate Programs (GEAR UP) grant award. The New Rochelle GEAR UP Program, now in its third year, serves an entire cohort of students beginning in the seventh grade at Isaac E. Young M.S. and follows the cohort through their high school career. Services continue in New Rochelle High School including: college awareness, admissions requirements, rigorous course selection and preparation, college visits, academic tutoring and mentoring, college entrance examination preparation and summer college as well as parent workshops on Financial Aid and postsecondary education. Several partners who support and provide services for the students and parents at NRHS include: Iona College, SER of Westchester, Academic Pathways, and Tomorrow Leaders, State and City University of New York, Commission on Independent Colleges and Universities, The College Board, Association of Proprietary Colleges, New York State Association of College Admission Counselors, New York State Financial Aid Administrators Association.

NEW ROCHELLE HIGH SCHOOL

New Rochelle High School is a four-year all-Regents high school. The single high school serves the community's diverse high school population numbering more than 3,200. Smaller Learning Communities within the school help to personalize the educational experience and provide greater opportunity to address student strengths, needs, and interests. Involvement in Smaller Learning Communities, sports, PAVE (Performing and Visual Arts), science research, WISE (Westchester Individualized Senior Experience), and other exciting activities, enables students to explore and participate in a great array of educational experiences. In addition, to enhance the Occupational Education program with new and additional course offerings, the school district is a member of the Southern Westchester BOCES. College Preparatory programs include honors courses and advanced placement (college level) courses in English, Art, Music, Math, Sciences, History, Computer Science and Foreign Languages.

Approximately 96% of all graduates pursue higher education, with 65% attending four-year colleges and universities, and 30% attending two-year colleges, 1% pursue vocational/technical education, 1.5% enter military service, and 1.5% enter employment. The percentage of students currently earning Regents diplomas is above the State average. All students are being prepared to pass the five Regents examinations required for graduation. Students compete well on standardized tests, and have an exceptional record of scholarship awards and placement in the schools of their choice, including highly selective colleges.

The school's facilities include a swimming pool, a planetarium, television studio, athletic complex, networked computer laboratories, Youth Employment Service (YES), Guidance and Career Information Services and Library and Media Center. A new wing opened in September 2005 currently houses music and art classrooms, as well as the Linda E. Kelly Theater, Museum of Arts and Culture, and cafeteria. Students' academic study is enhanced through a variety of programs, including foreign language exchange programs, an annual Model Congress, over 40 varsity and junior varsity sports programs, music and drama programs, an award winning literary/art magazine and newspaper. A broad range of extra and co-curricular activities offers students opportunities to broaden their academic experience, and to develop leadership and social skills, to pursue interests in the arts, athletics, language, travel, communications, or computers, to provide service to the community and to encourage social responsibility. The Ignite student-to-student mentoring program fosters a positive school environment and helps freshmen make a successful transition to high school.



December 2009

CITY SCHOOL DISTRICT OF NEW ROCHELLE • AN AWARD WINNING SCHOOL DISTRICT • WWW.NRED.ORG

Sunday	Monday	Tuesday	Wednesday	Thursday	Friday	Saturday
		1 Webster Family Art 6pm NRHS Fall Sports Awards Assembly Board of Ed Regular Monthly Meeting <i>(World AIDS Day)</i>	2 HALF-DAY - ALL SCHOOLSElem., Middle & High Schools No Morning Pre-K NRHS Financial Aid Night	3 Elementary Parent-Teacher Conference Night Davis Picture Retakes Webster Studio Arts Gr1,2,3 / Holiday Boutique 9am to 7pm	4 Elementary Report Card Distribution Trinity Holiday Shop Webster Studio Arts Gr4,5 NRHS PAVE Nutcracker 7:30pm	5 SAT Trinity Holiday Boutique 10am Ward Holiday Boutique 11am-5:30pm NRHS PAVE Nutcracker 2pm
New Rochelle Fund for Educational Excellence sponsors "Civics Week" in district schools						
6	7 Columbus Picture Make-Up Day Davis Toy Drive to 12/11 IEYMS Scholastic Book Fair through 12/11 Ward Book Fair to 12/11 (Webster Studio Arts K alternate day) <i>(Pearl Harbor Remembrance Day)</i>	8 Barnard PTA 7pm Columbus PTA 7pm Davis Holiday Boutique to 12/10 Webster Gala Gallery Opening/ Family Art 6pm / PTA Exec 7pm, General 7:30pm <i>(Bodhi Day)</i> <i>(Immaculate Conception)</i> <i>(Eid al-Adha)</i>	9 ELEMENTARY HALF-DAY No Afternoon Pre-K Jefferson Holiday Pot Luck CILA Breakfast 8am ALMS Principal's Luncheon NRHS Winterfest Choral 7:30pm	10 Webster Studio Arts Mini-Festival Gr1,2,3/ Principal's Holiday Staff Luncheon SEPTA/PTA Council Holiday Party <i>(Human Rights Day)</i>	11 Elementary Report Card Distribution Columbus Coffee with Principal 9:15am/ PTA Teacher Recognition Breakfast Trinity Photo Retakes Webster Studio Arts Gr4,5 NRHS Progress Reports Due <i>(Hamukah begins)</i>	12 ACT NRHS Cheerleading festival
13	14 Jefferson Holiday Gift Shop to 12/18	15 Davis PTA Holiday Breakfast 8am/ PTA 9:15am Webster Family Art 6pm/ Holiday Concert 7pm Board of Ed C.O.W. @NRHS 7pm <i>(Bill of Rights Day)</i>	16 Davis PTA Holiday Show 9:30am Ward Staff Appreciation Breakfast Webster Lunch with Principal Gr4	17 Trinity Winter Concert 10:00am, 1:45pm Ward PTA Exec. Board 7pm <i>(Webster</i> Studio Arts Gr1,2,3 alternate day) ALMS Staff Appreciation Breakfast NRHS PTSA Staff Appreciation Luncheon/ Winterfest Choral & Instrumental 7:30pm	18 Barnard Staff Holiday Breakfast 9am Columbus Winter Concert 9:15am <i>(Webster</i> Studio Arts Gr4,5 snow day)	19 <i>(Last day of Hamukah)</i>
20	21 Extended Day Program recess begins <i>(Winter begins)</i>	22 Jefferson Holiday Concert 10am Webster Gr1 Read with Me Pajama Party/ Holiday Concert 7pm	23 Jefferson Sing-A-Long K-2 1:30, Gr3-5 2:30	24 Offices Closed <i>(Christmas)</i>	25 Offices Closed <i>(Kwanzaa begins)</i>	26
				Schools Closed - Recess		
27	28 NRHS Holiday JV Basketball Tournament	29	30	31 Offices Closed <i>(New Year's Eve)</i> <i>(FirstNightNewRochelle.org Community Celebration through the Arts)</i>		

PUPIL PERSONNEL SERVICES

Professional staff of Pupil Personnel Services are committed to the success of all students in an educational setting. These services maintain census, records, and attendance information, as well as the following:



SPECIAL EDUCATION

The Special Education Department offers comprehensive services for students with disabilities ages 3 to 21 who are recommended to receive special education by the Committee on Special Education (CSE) or Committee on Preschool Special Education (CPSE). The programs provide individualized education in the least restrictive setting. Each school has a continuum of services including integrated co-teaching services staffed by a special education teacher. The department provides advocacy, support and participates with the district's SEPTA program. The district's transition planning program has been recognized as a statewide model.

Each September the district seeks to identify children with disabilities who will enter the public schools and are not identified by the district's Committee on Special Education. Parents or guardians who believe their children may have a disability should contact the Office of Special Education, 515 North Avenue, New Rochelle, NY 10801, Att: Yvette Goorevitch, Chairperson. Parents who suspect their preschool children may require special education services should contact the Chairperson, Committee on Preschool Special Education Barnard School, 129 Barnard Road, New Rochelle, NY 10801.

SPEECH AND HEARING

The district's Speech Language and Hearing Department is one of less than two-dozen in the nation and the only public school program in New York State to be accredited by the American Speech-Language-Hearing Association. Speech language pathologists and an audiologist provide diagnostic and treatment services for children throughout the district who may have communication problems. The professionals are members of the interdisciplinary pupil personnel team in each school. The speech language pathologists work with children individually or in groups, and offer guidance and consultation to parents and staff. The Preschool Speech Language Learning Center, approved by the State Education Department, provides services to three- and four-year-olds who are recommended by the Committee on Preschool Special Education.

HEALTH SERVICES

The Health Services Department, under the direction of a board certified Pediatrician, strives to care for the entire school community while offering individualized care to students with identified acute and chronic health conditions. Students in public, private and parochial schools are medically evaluated. Physical examination certificates must be submitted for new entrants, and students in grades K, 2, 4, 7, and 10. All students must comply with New York State Health Law immunization requirements. Through screening programs, students are examined for growth and nutritional status, vision and hearing impairment, scoliosis, and hypertension, and health records are maintained. Parents are apprised of all medical factors identified in school. Special medical examinations and consultations are offered based on referral from the building level Pupil Personnel Services Team or Special Education Department.

All candidates for interscholastic sports must have a medical evaluation, which includes Athletic Health History review and examination by a School Physician or their personal Physician.

School Nurses provide services for students with special health needs which must be met during the school day. These services are based on the private/clinic physician's treatment plan and must be consistent with State Education Department and School District policy and procedure. School Nurses are also a resource for parents who have concerns about how their child's health status may impact upon the child's educational program. They are knowledgeable about health services available in the community and can assist families in locating appropriate sources of general and specialty pediatric and dental care.

CONFIDENTIALITY OF MEDICAL & MENTAL HEALTH INFORMATION

The clinical staff of the New Rochelle City School District adheres to the standards of the Health Insurance Portability and Accountability Act (HIPAA) to the extent that those standards are applicable to school districts. In addition, the confidentiality of student medical/health information in student records is protected by the Family Educational Rights and Privacy Act (FERPA). A copy of the CSD's Record Policy is mailed to each student's home at the beginning of the school year and is printed on page 25 of this calendar.

SCHOOL SOCIAL WORK

School Social Workers are resources for the delivery of school-based support services, working as liaisons between schools, families, and community programs and agencies. Emphasis is placed on collaboration and coordination of services. By utilizing the social history, and other assessments, Social Workers collaborate with parents, teachers and other staff as part of a multi-disciplinary team in interpreting children's needs. They assist parents to become positively involved in their child's total educational experience. School Social Workers provide counseling to students individually and in groups, crisis intervention, parent education, and consultative services. They facilitate classroom-based and school-wide programs. School Social Workers also serve as vital resources to the district in the area of child abuse prevention, recognition and reporting.



January 2010

CITY SCHOOL DISTRICT OF NEW ROCHELLE • AN AWARD WINNING SCHOOL DISTRICT • WWW.NRED.ORG

Sunday Monday Tuesday Wednesday Thursday Friday Saturday

(National Book Month) NOTE: NYS changed Grade 3 to 8 ELA & Math assessments from January and March to the Spring.					1	2
					Schools & Offices Closed <i>(New Year's Day)</i>	
3	4 Schools Open	5 Barnard PTA 7pm Webster Family Art 6pm/ Lunch with Principal Gr3 Board of Ed Regular Monthly Meeting	6 <i>(Epiphany)</i>	7	8	9 WCSMA All-County Jazz Auditions 10am-2pm @Mam'k HS
10	11 Extended Day Registration through 1/29	12 Columbus PTA 7pm Jefferson PTA 7pm Trinity PTA 7pm Webster Gala Gallery Opening/ Family Art 6pm/ PTA Exec 7pm General PTA 7:30pm	13 Ward PTA 7:30pm ALMS Principal's Luncheon/ PTA 7:30pm IEYMS Winter Concert 7pm	14 NRHS PTSA 7:30pm (IEYMS Winter Concert snow day 7pm)	15 Barnard Gym Night 6:30pm Ward School Pep Rally Ted Murphy Shoreline Wrestling Tournament at NRHS	16
17	18 Schools & Offices Closed <i>(Dr. Martin Luther King, Jr. Birthday Observance)</i>	19 Barnard Pre-K Gallery Week Webster Family Art 6pm SEPTA 7:30pm Extended Day Registration through 1/29	20 SRC Policy Board PTA Council 7:30pm	21 Barnard Magnet Open House 7pm	22 Columbus International Food Night 6pm (snow date 1/29) Ward Sports-A-Thon ALMS Show Biz Kids NRHS End of Second Marking Period	23 SAT Webster Scholastic Chess Tournament 9am ALMS Show Biz Kids
24	25 Extended Day Registration through 1/29 "Food with Love" food drive to 2/5	26 Davis PTA & Exec. Board 7:30pm Ward Coffee with Principal Gr2 Parents 10am Board of Ed C.O.W. Meeting @Campus School 7pm NYS Regents / NRHS Mid	27 IEYMS Natl Jr Honor Society Induction 6:30pm	28 Barnard Universal PreK Open House ALMS Winter Concert 7pm IEYMS PTA 7:30pm NRHS Theater Production Winter Drama 8pm	29 Barnard No PreK / Staff Development	30
31			Year Exam Schedule			

PUPIL PERSONNEL SERVICES

SCHOOL PSYCHOLOGY

School Psychologists provide important support to assist students in achieving maximal benefits from their educational programs. Their services include support for prevention of educational and behavioral problems through early consultation with school staff and parents, identification of students' strengths and needs through observation, psychological and other assessment, individual and group counseling, development and implementation of primary prevention, social skills and esteem-building programs, positive behavioral interventions, parent education, crisis intervention, and other services. In collaboration with multi-disciplinary teams in each school, School Psychologists are available as resources to all members of the school community.

ATTENDANCE

Attendance teachers are essential participants in the district's efforts toward attendance improvement and dropout prevention. They provide outreach, through home visits to students and families, to address attendance problems before they become chronic. Attendance teachers help develop strategies for attendance improvement through consultation with the school staff, administration, the student and his or her family. They serve as liaisons with community agencies and Family Court. Through residency verification and investigations, Attendance Teachers help to insure that the district's resources are reserved for New Rochelle residents.

ALTERNATIVE EDUCATION PROGRAMS

The district operates an inclusionary alternative high school program. The Campus School, situated in a small supportive environment, provides a high school course of study leading to a diploma. Contact the Campus School Director, Director of Special Education or Assistant Superintendent of Secondary Education for details. Homebound instruction is provided for students confined to their homes or hospitals for extended periods due to illness or injury.

WORK PERMIT APPLICATIONS

Work Permits are required by law for employment of students under 18. Information about procedures and application forms are available from the School Nurse, or from the Census Office located on the third floor of City Hall, 515 North Avenue. Physical examinations for Work Permits are offered during the school year through the Health Office; students may arrange for these examinations with the School Nurse. When the application is submitted, students must provide proof of age, proof of physical examination within 12 months, and show their Social Security card. Applications are processed in the Census Office on school days from 2 to 4 p.m., and on business days when schools are closed from 10 a.m. to Noon and 2 to 3 p.m.

COUNSELING AND GUIDANCE

The services of the school counselor are essential to enhancing the educational experience of all students as they adjust to a complex and changing society. School counselors at the middle and high schools deliver a comprehensive, developmental program that is aligned with the National Standards of School Counseling Programs and the New York State Career Development and Occupational Studies learning standards. The school counseling program is designed to help students reach their full academic, career, and personal potentials through individual planning conferences, a guidance curriculum, and responsive services. Counselors are concerned with students acquiring an understanding of their interests, abilities, unique talents, and goals for the future in order to promote thoughtful course selections, post-secondary planning, and career development. Counselors are also instrumental in facilitating School-to-Career initiatives. Counselors help parents further develop the positive educational, personal and social growth of their children by facilitating open channels of communication between the home and the school and, when necessary, coordinating parent conferences with teachers and the pupil personnel team. By integrating the New York State learning standards into the school counseling program, counselors reinforce the skills taught in the classroom and teach students decision-making, goal-setting, and problem solving skills. Counselors meet with all students individually and in groups throughout the school year.

SPECIAL NEEDS ACCOMMODATION

The New Rochelle City School District is committed to encouraging participation by the public in school district meetings and events. Persons with special needs may request accommodations to meet those needs by calling the school district's §504 Access Coordinator, Dr. Diane Massimo, at least two weeks prior to the scheduled event. Dr. Massimo can be reached at 515 North Avenue, New Rochelle NY 10801-3416 or by telephone at (914) 576-4233. Parents who require special accommodations to participate in individual school-initiated student conferences are encouraged to notify their building principals. Notice should be submitted sufficiently in advance of the scheduled meeting to allow appropriate arrangements to be made.

CENSUS

A continuous census is maintained of resident minors enrolled in public and non-public schools in and outside the City of New Rochelle. Pupil population data includes individual and family information, essential for district projects. All working papers are issued by the Census Office.

CHANGE OF ADDRESS OR PHONE

Any change of a student's personal status, such as change of address (including apartment number), telephone number, family name, should be reported to the school office. Parents must also notify the school of changes in telephone numbers where they may be reached in cases of emergency. Personal information will be kept confidential.



February 2010

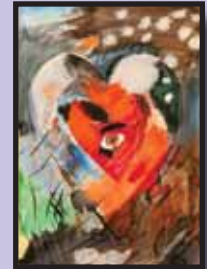
CITY SCHOOL DISTRICT OF NEW ROCHELLE • AN AWARD WINNING SCHOOL DISTRICT • WWW.NRED.ORG

Sunday Monday Tuesday Wednesday Thursday Friday Saturday

(Black History Month)

(National Children's Dental Health Month)

Students interested in playing Spring sports must be medically cleared/have a current sports physical exam on file with the Health Office. Students whose last sports exam was conducted after March 2009 must be examined in school or by their personal physician. All students should report to the Health Office to pick up the appropriate form (**the CSD Health Appraisal form must be used and signed by parent and physician**) or sign up for an in-school exam. Students whose exams are current need to complete the Athletic Health History update form with their parents and submit it to the Health Office in February. As the School Nurses create the medical clearance lists for coaches, all students who intend to participate in a Spring sport need to speak with their School Nurse.



	1 <i>(National Freedom Day)</i> ALMS PTA "Food With Love" Food Drive Kickoff PTA Food Drive to 2/13 Extended Day third marking period Adult Ed Registration to 3/5 <i>(National School Counseling Week)</i>	2 Barnard PTA 7pm Board of Ed C.O.W. 7pm Regular Monthly Meeting 8pm @ IEYMS <i>(Groundhog Day)</i>	3 Webster Lunch with Principal Gr2 Literature Festival Kickoff	4 Ward 50 th Anniversary Celebration Kick-off 7pm NRHS Dinner Theater 6pm	5 BARNARD Magnet Application Deadline 5pm City Hall Barnard Valentine Bingo 6:30pm Columbus PTA Movie Night 7pm Jefferson PTA Bingo 7pm Webster Black History Family Night 6:30pm	6
7	8 Adult Ed Registration to 3/5	9 Columbus PTA 7pm Davis Valentine's Day Boutique to 2/11 Jefferson Math Family Night Gr K,1,2 with children 6:30pm Trinity PTA 7pm Webster Gala Gallery Opening/ PTA Exec 7:30pm NRHS Cheer Show 8pm	10 ALMS Principal's Luncheon/ PTA Meeting 9:30am ALMS/IEYMS Gr8 Parent Orientation at NRHS 7:30pm	11 Ward Valentine Sale UCA Nat. HS Cheerleading Championships FL to 2/12	12 NYS Alternate Assessment Ends Columbus Coffee with the Principal 9:15am <i>(Abraham Lincoln's Birthday)</i>	13
14 <i>(Valentine's Day)</i> <i>(Chinese New Year - Year of the Tiger)</i>	15 Offices Closed <i>(Presidents' Day)</i>	16 Offices Closed	17 <i>(Ash Wednesday Day - Lent Begins)</i> <i>(National PTA Founders Day)</i> Schools Closed - Recess	18	19	20
21	22 Webster Studio Arts GrK NRHS AP Art Show to 3/5 at the MAC Adult Ed Registration to 3/5 <i>(George Washington's Birthday)</i>	23 Davis PTA 6:30pm Webster Coffee with Principal 9am Board of Ed C.O.W. @ Davis 7pm	24 IEYMS PTA 7:30pm NRHS AP Art Exhibit Reception PTA Council 7:30pm	25 Trinity Gr 4-5 Family Literacy Night 6:30pm Webster Studio Arts Gr1,2,3 SEPTA Exec. Brd. 7:30pm WCSMA Elem-Intermed. All-County Band & Orch. rehearsal 3:30-6:30	26 BARNARD Magnet Lottery Webster Studio Arts Gr4,5 IEYMS PTA Gr7 Pajama Movie Night 6:30pm	27 <i>(Purim begins at Sunset)</i>
28						

TRANSPORTATION

Free transportation is provided for pupils who are New Rochelle residents enrolled in kindergarten through sixth grade only, who live at least 1-½ miles but less than 10 miles from the school they attend. Sixth grade students who are eligible will receive free metro cards for public transportation to-and-from school. No trips home for lunch are provided. Pre-Kindergarten children attending school half-day — morning or afternoon — are transported according to schedule.

The district is not required to provide door-to-door service, except for pupils enrolled in Special Education programs. Students in kindergarten, and their siblings, will be dropped off at the home address following the 3:15 p.m. dismissal; however, such services do not include buses or vans entering private driveways, roads or narrow dead end streets.

Safety Reminders. Parents should familiarize pupils with bus stop locations, and ensure that pupils arrive at their stop on time. Pupils are transported to and from bus stop locations only. Children will be discharged at their assigned bus stop, even if there is no adult present to receive them, except for special education students. The safety of the pupil between the home and the bus stop location is the responsibility of the parent. Avoid arriving too early or too late. Stress the importance of remaining seated and reasonably quiet while the bus is in motion. Students should dress for weather conditions, and visibility in inclement weather. Policies and procedures, and evacuation drills are in place to ensure your child's safety. Please support them. To maintain discipline, the school district reserves the right to suspend transportation privileges. **Note:** There will be a fifteen minute required emergency early dismissal on *October 9, 2009*.

Application Procedures:

To Private Schools - April 1st is the deadline for requests for free transportation for children in grades kindergarten through six who attend private or parochial schools. Applications received after the April 1st deadline, (or requests for a change of school after April 1st on applications filed prior to April 1) will be approved only if additional expense is not incurred by the school district. Requests should be sent to the Transportation Office, City School District, 515 North Avenue, New Rochelle, NY 10801. Anyone who moves into the district after April 1 has 30 days to apply for transportation. Transportation applications must be filed *every year* for students who attend non-public schools through grade six.

To Child Care Providers - Child care transportation is offered to children attending public and non-public schools **within** the City of New Rochelle. The child care provider must be located in New Rochelle and be 1.5-miles from the school and within the attendance zone of the school, except for licensed child care locations in New Rochelle which must be 1.5-miles from the school, but have no zone requirement. Parents of students in grades 1 to 5 must submit written applications for transportation to child care locations by April 1st of *each year*. Applications for newly enrolled kindergarten, magnet, or "district Kaleidoscope" students must be submitted by August 1st. Child care transportation for Magnet and New York State Pre-Kindergarten students is not provided. Applications by families moving into New Rochelle must be received within 30 days after establishing residency. Applications are available in the main offices at elementary schools and at the Board of Education Transportation Office at City Hall. Further details are printed on the back of the application.

To After School Religious Instruction - Written application must be submitted annually to the Transportation Office and will be approved on a first come, first served basis for any seats available on the designated bus route. Applications are available in the main offices at elementary schools and at the Board of Education Transportation Office at City Hall for those who are interested. Further details and requirements are printed on the back of the application.

MEAL PROGRAM

Parents can put money on their child's breakfast/lunch account as needed. Cash or checks can be given to the cashier at each school for deposit into the student's account via the student's ID number. Each time the student purchases a meal or snack it will automatically be subtracted from the student's account.

For your convenience, breakfast and lunch menus are distributed monthly by elementary school classroom teachers. Menus are posted in secondary schools, and are available at the serving lines.

Breakfast and lunch is offered at all schools. Elementary school meal prices: breakfast - \$1.25 full price, 25¢ reduced; lunch - \$2.25 full price, 25¢ reduced. Middle School meal prices: breakfast - \$1.25 full price, 25¢ reduced; lunch - \$2.50 full price, 25¢ reduced; High School Meal prices: breakfast - \$1.50 full price, 25¢ reduced; lunch - \$2.75 full price, 25¢ reduced. For more information contact the School Lunch Office at 576-4217 or 576-4216.

Our Food Services Department and members of the school community are working to enhance the health value of the menu items offered to our students consistent with our new Wellness Policy. Parents are encouraged to support healthy changes by offering whole grains, low fat milk, fresh fruits and vegetables, and other nutritional foods at home and in the snacks they send to school. [This refers to school age children. Infants under 24 months of age should not be given low fat milk.]

Nutrition content of school menu items is posted on the CSD web site - www.nred.org. Refer to the list under "Resources" in the left column of the home page, click on "Cafeteria Services," then click on "Nutrition Content".

FREE/REDUCED PRICED MEALS

Breakfast and lunch is offered free or at reduced prices without discrimination to students who meet Federal income eligibility guidelines. Families who receive food stamps or ADC are eligible and should submit the original letter of eligibility provided by the social agency to the school district as soon as school is in session. Applications for free/reduced meal eligibility are available at each school and from the School Lunch Office located in the high school at 265 Clove Road, New Rochelle, NY 10801. Applications are printed in on page 28 of this directory, and are distributed the opening week of school. Signed applications must be returned by September 15 each year. All information is kept confidential.



REINSPECTION NOTICE

Under the provisions of the Federal AHERA program and the New York State Education Department, all public school buildings must be inspected every three years and periodically checked every six months to update the district's asbestos management plans. New Rochelle's first inspection under AHERA was completed in 1989. Warren & Panzer Engineers conducted re-inspection in 2004 as well as the last three-year re-inspection in 2007. The next re-inspection will be conducted in 2010. Copies of the district's management plans are on file in each school. The district remains in full compliance with the provisions of all state and federal laws regarding asbestos management.

NON-DISCRIMINATION STATEMENT

In the administration of its programs and policies, the City School District of New Rochelle does not discriminate on the basis of age, sex, race, creed, color, national origin or disability. It complies with Title VI, Title VII of the Civil Rights Act of 1964, Title IX of The Educational Amendment of 1972, Section 504 of The Rehabilitation Act of 1973, The Age Discrimination Act of 1975, the Americans with Disabilities Act of 1990 and the Individuals with Disabilities Education Act. Inquiries regarding this policy should be referred to the School District's Compliance Officer, Dr. Diane C. Massimo, Assistant Superintendent, Instructional Support Services, 515 North Avenue, New Rochelle NY 10801-3416, (914) 576-4206.



March 2010

Sunday Monday Tuesday Wednesday Thursday Friday Saturday

<p>(No Junk Food Week varies by school during March) (Music in Our Schools Month, Youth Art Month, Irish American Heritage Month, National Women's History Month, National Middle Level Education Month, National Nutrition Month, Social Work Month, National Mental Retardation Awareness Month)</p>	<p>1 Barnard Kindergarten Gallery Week Webster Studio Arts GrK Adult Ed Registration to 3/5 (School Social Work Week)</p>	<p>2 Barnard PTA 7pm NRHS Winter Sports Awards Assembly 3:15pm @ NRHS Board of Ed C.O.W. 7pm Regular Monthly Meeting 8pm @ Ward</p>	<p>3 Columbus Expo 6pm Ward PTA 7:30pm ALMS "Pennies for Patients" Kickoff Assembly Board of Ed Budget Overview Session</p>	<p>4 COLUMBUS Magnet Open House 7pm Columbus Expo Webster Studio Arts Gr1,2,3 NRHS PTSA 7:30pm</p>	<p>5 Elementary Report Card Distribution Columbus Expo Webster Studio Arts Gr4,5 /Family Night Bingo 7pm NRHS Third Marking Period Progress Reports Due / Model Congress</p>	<p>6 NRHS Model Congress</p>
<p>7</p>	<p>8 Webster Studio Arts GrK / Science Fair & Nutrition Night/ PTA Exec Brd 7pm General 7:30pm NRHS Spring Sports Begin Adult Ed Courses Begin</p>	<p>9 Webster Magnet Open House 7pm / Gala Gallery Opening Columbus PTA Exec. 7pm Jefferson PTA 7pm Board of Ed Budget Review Session</p>	<p>10 HALF-DAY - ALL SCHOOLS Elem., Middle & High Schools No Morning Pre-K <i>Staff Recognition Lunch: Barnard, Davis, Trinity, Ward</i></p>	<p>11 Davis Community Outreach Senior Breakfast Webster Studio Arts Gr1,2,3 MAC Women's History Month exhibit to 4/9</p>	<p>12 Davis New Kindergarten Parent Orientation 9:15am Jefferson Movie Night 6:30pm Webster Studio Arts Gr4,5 WCSMA HS All-County Jazz Fest. Concert Mam'k HS 8pm</p>	<p>13 SAT I Only</p>
<p>14 Daylight Savings Time Begins - Spring Clocks Ahead One Hour Appleseed Arcade</p>	<p>15 Ward Nutrition Week Webster Studio Arts GrK (No Junk Food Week) (National Poison Prevention Week)</p>	<p>16 IEYMS PTA Staff Appreciation Breakfast Board of Ed Budget Review Session</p>	<p>17 ALMS Principal's Luncheon/ PTA 7:30pm NRHS Pops Concert 7:30 pm (St. Patrick's Day)</p>	<p>18 Literature Festival Finale Jefferson Gr2 Make & Take Literacy Night 6pm Trinity Recorder Concert 10am Webster Studio Arts Gr1,2,3 SEPTA 7:30pm WCSMA: Elem Intermed. Band-Orch. rehearsal 3:30-6:30</p>	<p>19 Elementary Report Card Distribution Barnard Gym Night II 6:30pm Webster Studio Arts Gr4,5</p>	<p>20 WCSMA Elem. Intermed. All-County Music Festival SUNY Purchase Orch. 11am Chorus Concert 4pm (Spring Begins)</p>
<p>21 WCSMA Elem. & Intermed. All-County Music Festival SUNY Purchase Band Concert 11am</p>	<p>22 Modified Spring Sports Begin Webster Studio Arts GrK</p>	<p>23 Davis PTA & Exec Board 7:30pm Board of Ed C.O.W. @ALMS 7pm</p>	<p>24 IEYMS PTA 7:30pm PTA Council 7:30pm SRC Policy Board ALMS Spanish Spelling Bee NRHS College Night 6:30pm</p>	<p>25 Trinity Kindergarten Family Literacy 6:30pm Ward Coffee with Principal Gr3 Parents 10am Webster Studio Arts Gr1,2,3 NRHS PAVE Auditions 3:15pm /College Fair 10am-12:30pm New Rochelle Fund Foundation Awards Gala @6:30pm</p>	<p>26 Barnard No Pre-K / Staff Development Davis Family Fun Night 7pm Webster Studio Arts Festival Gr4,5</p> <div style="border: 1px solid black; padding: 5px; text-align: center;"> <p>APPLICATION DEADLINE for Columbus & Webster Magnet Programs</p> </div>	<p>27</p>
<p>28 (Palm Sunday)</p>	<p>29 (Passover begins at sunset) Webster Missoula Children's Theater to 4/2</p>	<p>30* (Passover first day) Schools Closed - Recess</p>	<p>31* (Passover second day)</p>	<p>NOTE: NYS Regents changed Grade 3 to 8 ELA & Math assessments from Jan. and March to the Spring.</p> <div style="display: flex; justify-content: space-around;">   </div>		

*Designated Religious Observance (Reference P. 2)

DISTRICT AWARDS AND RECOGNITIONS

- 2009** *Business Week Magazine* named New Rochelle one of "The Best Places to Raise Your Kids 2009." The magazine noted the City's affordable real estate as well as its rich diversity. Every school in the School District made Annual Yearly Progress. The NYS Education Department commended the School District for its high performing and gap closing schools.
- 2008** NYS Education Commissioner Richard Mills visits William B. Ward Elementary School and applauds district programs. New Rochelle Schools and District receives "High Performing" and "Rapidly Improving" recognition from NYS Education Department. New Rochelle High School ranks in the top high schools in the nation on a list published by *Newsweek*. MetLife Foundation recognizes Isaac Young Middle School as Breakthrough School.
- 2007** New Rochelle High School ranks in the top high schools in the nation on a list published by *Newsweek*. The New York State Department of Education designates the City School District of New Rochelle as a "High Performing/ Gap Closing" District. New Rochelle High School students perform at Carnegie Hall.
- 2006** *American School Board Journal* presented 2006 Magna grand prize award to school district in recognition of the CILA (Children's International Language Academy) program at Trinity and Ward Elementary Schools. The New York State Education Department designated George M. Davis Jr. and William B. Ward Elementary Schools as high performing schools based on standardized tests, and Isaac E. Young Middle School as a High Performing/Gap Closing School. Track athlete Lynne Layne holds two individual national championship titles.
- 2005** New Rochelle High School ranks in the *Newsweek* top high schools in the nation on a list compiled by Jay Mathews. New Rochelle is named one of the "Best 100 Communities for Music Education" in the nation by the American Music Conference. NRHS Varsity Football and Basketball teams were NYS Section AA finalists, and the Cheerleading team held second place in the nation at the Universal Cheerleading Association National HS Cheerleading Championships. NRHS student Nichols Gulati is named semifinalist in the highly competitive Intel Science Talent Search. In 2004, Matthew Fasman and Andrew Telzak are named, and Matthew Fasman is also selected for the 2004 U.S. Physics Team, and was one of 12 national finalists for the National Wendy's High School Heisman Award. Three NRHS students were named Intel semi-finalists in 2003 — Chelsea Backer and Jason Freidman, and Julian Gingold, who advanced to Finalist status. Three NRHS students were named semi-finalists in 2002 — Anthony Halperin, Frank Provenzano and Benjamin Fanelli. Three NRHS students were named semi-finalists in 2001 — Joshua Katzeff, Matthew Louis Siegel, Sabrina Emily Welsh. In 2000, Daniel Guarda was a semifinalist. In 1999, Anna Halperin was selected, and in 1997, Indrajit Roy-Chowdhury received the honor.
- 2004** The NRHS Varsity Cheerleading team placed second in the national at the Universal Cheerleading Assoc. National HS Cheerleading Championships in Orlando, FL.
- 2003** NRHS Varsity Football team wins NY State Football Class AA Football Championship. Clifford Levy, Class of '85, wins Pulitzer Prize for Investigative Reporting. Anna Weiss, Class of '97, named Rhodes Scholar.
- 2001** The New Rochelle High School Varsity Football team were finalists in the New York State tournament, and competed in the Carrier Dome in Syracuse, NY. Track athlete NRHS junior Shenae Dawkins, winner of eight state titles, earned a national title in the long jump. Teams with League Championships this year include cheerleading, ice hockey, girls swimming, girls track, volleyball, and wrestling. For 10 consecutive years, SchoolMatch, the nation's largest independent school selection service, placed New Rochelle in the top 15% of school districts nationwide.
- 2000** New Rochelle High School ranks in the top 2% of high schools in the nation on a revised list compiled by Jay Mathews for *Newsweek*. Isaac E. Young Middle School is the only school in NYS to receive the Magna Award from *The American School Board Journal*, recognizing outstanding programs.
- 1999** New Rochelle students of music perform a benefit concert for the New Rochelle Fund for Educational Excellence with actor Ossie Davis at Carnegie Hall.
- 1997** Isaac Young Middle School earns the National Blue Ribbon School of Excellence distinction from U.S. Department of Education following nomination by the NYS Education Department
- 1996** New Rochelle High School earns a second National Blue Ribbon School of Excellence distinction from U.S. Department of Education
- 1995** New Rochelle High School - nominated by New York State Education Department for National Blue Ribbon School of Excellence program
- 1994** Daniel Webster Magnet School - selected as a Blue Ribbon School of Excellence by the U.S. Department of Education
- 1993&94** More NRHS students were awarded federally funded Robert C. Byrd Honors Scholarships than any other public high school in Westchester
- 1992** NRHS Counseling Department received the Program Award from the NYS Association for Counseling & Development

EDUCATIONAL ACCESS TV ON CABLE

Educational programs and pre-recorded video programs of events in the school district are broadcast on the district's educational television station, Cablevision Channel 77/917 or Verizon Channel 30 available to cable TV customers in the City of New Rochelle. Often broadcast are athletic meets, high school student produced programs such as the magazine format "Views From The Bridge," the high school's news program "New Ro News" and district programs as "Focus on Education" with the Superintendent. Program schedules are broadcast during the school year. The station broadcasts bulletin board notices and pre-recorded programs during July and August.

CONTINUING EDUCATION AND ADULT EDUCATION PROGRAMS

The district provides a year-round program of Continuing Education for adults. Courses are offered at New Rochelle High School in many subject areas. For specific course information, call the Continuing Education Office evenings from 5 to 10 p.m., Monday through Thursday at 576-4547. Adult Education registration is held from September 14 to Oct. 8 for classes beginning Oct. 13; February 1 to March 4 for the Spring term beginning March 8. Registration for senior citizens is half of the standard fee.

High School Equivalency Program (GED) is for individuals preparing for the high school equivalency examination; and the Extended Day Program is an alternative to regular daytime high school classes.

MAC - MUSEUM OF ARTS & CULTURE

The Museum of Arts & Culture, located in New Rochelle High School, provides an on-site museum experience for students and serves as a cultural asset for the entire community. The Museum of Arts & Culture is the only Regents- chartered museum housed in a school in New York.

The MAC is funded by the non-profit New Rochelle Fund for Educational Excellence. Gallery times for the Museum of Arts and Culture are Monday- Friday 9 to 3pm, Tuesdays and Thursdays from 7 to 9pm. For current exhibit details, call (914) 576-6518 or go to dbmac.org.

2010 ANNUAL SCHOOL ELECTION/ BUDGET VOTE

The Annual School Election/ Budget Vote will be held Tuesday, May 18, 2010. Voting will take place at the district's thirteen (13) School Election Districts, and the polls will be open from 7 a.m. to 9 p.m.

The Public Hearing on the Proposed 2010-2011 Annual School Budget will be held Tuesday evening, May 4, 2010 at 7:30 o'clock.

A qualified voter is one who will be at least 18 years of age on the day of the election, a citizen of the United States and a resident of New Rochelle for at least 30 days prior to the day of the election.

In order to vote in the election, qualified voters must be permanently registered with the Westchester County Board of Elections or register in person with the School District for this election at the school district offices located at 515 North Avenue. For information, please contact the School District Clerk's Office at 576-4219.

NOMINATION OF CANDIDATES


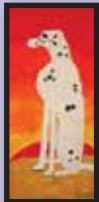
Candidates for election to the Board of Education are nominated by petitions signed by at least 100 qualified voters of the school district and filed with the District Clerk no later than Wednesday, April 28, 2010, between the hours of 9 a.m. and 5 p.m. Petition forms may be obtained from the office of the District Clerk, 576-4219.

ABSENTEE BALLOTS

The District Clerk must receive completed Absentee Ballot applications no later than 5 p.m. Tuesday, May 11, 2010 if the ballot is to be mailed to the voter; and 5 p.m. Monday, May 17, 2010 if the ballot is to be issued to the voter in person. Those wishing an Absentee Ballot application should call 576-4219.



Sunday Monday Tuesday Wednesday Thursday Friday Saturday

<p><i>(Keep America Beautiful Month)</i> Students interested in playing Fall sports must be medically cleared/have a current sports physical exam on file with the Health Office. Students whose last sports exam was conducted after August 2009 may be examined in school or by their personal physician. All students should report to the Health Office to pick up the appropriate form (the CSD Health Appraisal form must be used and signed by parent and physician) or sign up for an in-school exam. Students whose exams are current need to complete the Athletic Health History update form with their parents and submit it to the Health Office in August/September (see page 22 for schedule). As the School Nurses create the medical clearance lists for coaches, all students who intend to participate in a Fall sport need to speak with their School Nurse. In-school examinations for Fall sports are conducted in May and June.</p>		<p>NOTE: NYS changed Grade 3 to 8 ELA & Math assessments from January and March to the Spring.</p> 		<p>1 Offices Closed</p>		<p>2 Offices Closed <i>(Good Friday)</i></p>		<p>3 ACT Webster Missoula Children's Theater Performance 11am & 1:30pm</p>					
<p>4 <i>(Easter)</i></p>		<p>5* Davis Field Day T-Shirt Sale to 4/16 Webster Studio Arts GrK Transportation Application Deadline for students in non-public schools & childcare <i>(Passover seventh day)</i></p>		<p>6* Barnard PTA 7pm Board of Ed C.O.W. 7pm Regular Monthly Meeting 8pm @Trinity <i>(Passover eighth day)</i></p>		<p>7 Columbus Spring Pictures Webster Science Exploration Month Kick-Off/ Lunch with Principal Gr5</p>		<p>8 Webster Studio Arts Gr1,2,3</p>		<p>9 NRHS End of Third Marking Period Ward Movie Night K-2 7pm Webster Studio Arts Gr4,5</p>		<p>10 NRHS Track & Field Invitational</p>	
Webster Kindergarten Registration													
<p>11 <i>(National Holocaust Remembrance Day)</i></p>		<p>12 Trinity Spring Photos Webster Studio Arts GrK Extended Day Fourth Marking Period <i>(National Library Week)</i></p>		<p>13 Jefferson Screening Make-Up Day Trinity Spring Photos / PTA 7pm Webster Gala Gallery Opening/ PTA Exec 7pm/ Camp Fair 7:30-9pm</p>		<p>14 NYSESLAT Speaking through 5/25 Davis Spring Concert 10am ALMS Principal's Luncheon/ PTA 7:30pm NRHS Art Honor Society Induction 8am MAC NAHS exhibit to 4/30</p>		<p>15 MAGNET LOTTERY City Hall 1pm Columbus Kindergarten Registration Make-ups Webster Studio Arts Gr1,2,3</p>		<p>16 Jefferson Great Read Aloud 10am Webster Studio Arts Gr4,5 ALMS Show Biz Kids- 7pm</p>		<p>17 NRHS Mentoring Program Health Fair 8am-1pm ALMS Show Biz Kids- 7pm</p>	
Columbus Kindergarten Registration through 4/16													
<p>18 <i>(Public School Volunteer Week)</i></p>		<p>19 Gr2 ELA Math Test to 4/30 Davis Baby Drive to 4/23 Webster Studio Arts Festival GrK Family University 5:30pm</p>		<p>20 Jefferson Spring Pictures Webster Meet ALMS Principal PTA Council 7:30pm</p>		<p>21 Barnard "Live Green" Day Columbus Kindergarten Registration Make-ups SRC Policy Board <i>(Administrative Professionals Day)</i></p>		<p>22 Barnard First Grade Musical Columbus Earth Day Celebration Trinity Gr1&2 Family Literacy Night Ward Green Day Webster Studio Arts Festival Gr1,2,3 NRHS Spring Musical 8pm <i>(Take Our Daughters & Sons to Work Day) (Earth Day)</i></p>		<p>23 Barnard Healthy Luau 6:30pm Webster Studio Arts Gr4,5 Festival / International Dinner 7pm NRHS Spring Musical 8pm</p>		<p>24 IEYMS Wellness / Health Fair NRHS Spring Musical 8pm</p>	
Ward Kindergarten Registration													
<p>25 NRHS Spring Musical 2pm</p>		<p>26 NYS Gr 3 to 8 ELA Tests Gr2 ELA Math Test to 4/30 SEPTA "We Are One" Dinner (Webster Studio Arts GrK snow day)</p>		<p>27 NYS Grades 3 to 8 ELA Tests/ Makeups to 5/5 Board of Ed C.O.W. 7pm/ Special Meeting @Webster</p>		<p>28 NYS Grades 3 to 8 ELA Tests/ Makeups to 5/5 Columbus Early Grades Literacy Fair 6pm/ PTA Scholastic Book Fair to 4/30 Ward Coffee with Principal Gr 4 Parents 10am IEYMS PTA 7:30pm</p>		<p>29 Columbus Early Grades Literacy Fair (Webster Studio Arts Gr1,2,3 snow day) NRHS National Honor Society Induction 7:30pm/ Prom Ticket Sales</p>		<p>30 Columbus Early Grades Literacy Fair (Webster Studio Arts Gr4,5 snow day) NRHS Prom Ticket Sales <i>(Arbor Day)</i></p>			

*Designated Religious Observance (Reference P. 2)



NEW ROCHELLE COUNCIL OF PARENT-TEACHER ASSOCIATIONS

2009-2010 PTA COUNCIL EXECUTIVE COMMITTEE

Co-Presidents

Valerie Orellana	14 Belleview Place 10801	632-8307
Martin Daly	2 Hamilton Ave 10801	636-7999

Executive Vice President

Lisa Dorman	29 Rolling Way 10804	235-0703
-------------	----------------------	----------

Secretary

Debbie Morris	35 Long Vue Ave 10804	632-8582
---------------	-----------------------	----------

Treasurer

Linda Fosina	57 Highview Avenue 10801	633-1505
--------------	--------------------------	----------

Chairs

Advocacy

Mary Jo Jacobs	33 Vaughn Avenue 10801	654-0558
Debbie Morris	35 Long Vue Ave 10804	632-8582

Community Service

Beth Levy	3 Plymouth Drive Scarsdale 10583	723-5125
Robin Frankel	141 Verdun Avenue 10804	632-2592

Conflict Resolution

Marjorie Sachs	14 Lakeside Drive 10801	235-0631
Dorothy Larkin	250 Coligni Avenue 10801	576-5213

Diversity

Arlen Gargagliano	74 Lakeside Drive 10801	637-2276
-------------------	-------------------------	----------

Nutrition

Dale Walkonen	39 Glenwood Avenue 10801	576-8701
---------------	--------------------------	----------

Public Relations

Theresa Kump Leghorn	207 Wellington Avenue 10804	654-8356
----------------------	-----------------------------	----------

Sustainability

Amy Jackson	84 Glenwood Avenue 10801	576-1429
-------------	--------------------------	----------

Regional Representative

Christanne Petrone	21 Harding Drive 10801	576-4134
--------------------	------------------------	----------

Teacher Representative

Maria Torres-Korn	67 Elm Street 10801	632-6849
-------------------	---------------------	----------

Unit Presidents

NRHS

Lisa Burton	257 Centre Ave 10805	576-3066
Lisa Dorman	29 Rolling Way 10804	235-0703

ALMS

Donna Crisp	69 Irving Place 10801	235-0258
Angela Taylor	312 Victory Blvd 10804	813-8140

IEYMS

Adrienne Quinn	97 Liberty Ave 10805	235-0492
----------------	----------------------	----------

Barnard

Melody Baez	24 Ellenton Ave 10801	654-8776
Alysa Vasapolli	185 Paine Ave 10804	636-6640

Columbus

Luz Maldonado	54 Centre Ave 10801	654-9744
---------------	---------------------	----------

Davis

Amy Pace	49 Mulberry Lane 10804	834-1588
Carolyn Fay	41 Linwood Road 10804	834-3014

Jefferson

Donna O'Keeffe	169 Neptune Ave 10805	636-5246
Holly Bruni	131 Weyman Ave 10805	576-4430

Trinity

Allison Cacciola	2266 Palmer Ave 10801-2924	740-3363
Elizabeth Foote	194 Centre Ave 10805	740-5963

Ward

Maryann Cantone	22 Bailey Pl 10801	632-5722
Sue DiBuono	49 Halcyon Ter 10801	235-3253

Webster

Erica Alexander	41 Heminway Ave 10801	654-8259
Mary McCormack	95 Glenmore Dr 10801	576-4460

SEPTA

Naomi Brickel	535 Forest Ave 10804	834-0741
Mary Jo Jacobs	33 Vaughn Avenue 10801	654-0558

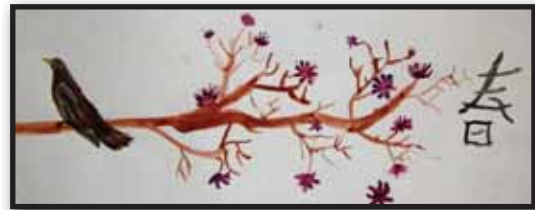




Sunday Monday Tuesday Wednesday Thursday Friday Saturday

  							<p>1</p> <p>SAT <i>(May Day, Law Day)</i></p> <p>NOTE: NYS changed Grade 3 to 8 ELA & Math assessments from January and March to the Spring.</p> <p><i>(National Physical Fitness & Sports Month www.fitness.gov) (Better Hearing & Speech Month www.asha.org)</i></p>
<p>2</p>	<p>3</p> <p>Barnard PTA 7pm Columbus PTA mtg 7pm Scholastic Book Fair Davis PTA 7:30pm Webster PTA Exec 7pm/ General 7:30pm</p> <p>“Our Children, Our Artists” Elementary Art Exhibit at NRPL to 5/15</p> <p>Advanced Placement Exams</p>	<p>4</p> <p>Davis Boutique & Plant Sale to 5/6/ PTA 7:30pm Board of Ed Monthly Meeting / Public Hearing on Proposed School Budget 7:30pm PTA Council 7pm <i>(National Teacher’s Day)</i></p>	<p>5</p> <p>NYS Grade 3 to 8 Math Tests ALMS Race Against Hunger IEYMS Gr5 Parent Orientation 6:30pm “Our Children, Our Artists” Elementary Art Exhibit Reception @NRPL <i>(Cinco de Mayo)</i></p>	<p>6</p> <p>NYS Grade 3 to 8 Math Tests / Make-ups to 5/14 Barnard Spring Photos Columbus Mother’s Day Plant Sale ALMS Spring Concert 7pm NRHS WISE Model Presentation</p> <p>Mother’s Day IEYMS, Ward, Webster</p>	<p>7</p> <p>NYS Grade 3 to 8 Math Tests / Make-ups to 5/14 Gr4&8 Science Written & Performance Make-Ups End Barnard Mother’s Day Plant Sale/ Spring Photos NRHS Progress Reports Due</p> <p>Plant Sales: IEYMS, Ward, Webster</p>	<p>8</p>	
<p>9</p> <p><i>(Mother’s Day) (National Music Week, Reading is Fun Week www.rjf.org)</i></p>	<p>10</p> <p>Barnard PTA Guest Speaker 7pm Davis Humane Society Drive to 5/14</p>	<p>11</p> <p>Jefferson CILA Italian-English 6:30pm/ CILA Spanish-English 8pm/ PTA 7pm Trinity PTA 7pm Webster Music Night/ Ice Cream Social</p>	<p>12</p> <p>Ward PTA 7:30pm ALMS Principal’s Luncheon/ PTA 7:30pm <i>(National School Nurse Day)</i></p>	<p>13</p> <p>Davis New Kindergarten Visit 3:15pm Trinity Spring Concert 10am, 1:45pm, 7:30pm Webster Staff Luncheon ALMS Spring Concert 7pm NRHS PTSA 7:30pm “Our Children, Our Artists” Elementary Art Exhibit Ends <i>(Ascension)</i></p>	<p>14</p> <p>Barnard No Pre-K / Staff Development Jefferson CILA event IEYMS Gr7 Career Day / Gr8 NRHS Visit</p>	<p>15</p> <p>Barnard International Dinner 5:30pm <i>(Armed Forces Day)</i></p>	
<p>16</p> <p>Davis Carnival</p>	<p>17</p> <p>NYSESLAT LRW to 5/25 Test Administration & Makeup Jefferson Volunteer Luncheon @ Noon New Rochelle Fund for Educational Excellence Poetry Out Loud 7pm</p>	<p>18</p> <p>School Board Election & Budget Vote Barnard Grandparents Day Columbus Special Persons Day Jefferson Play 10am & 6:30pm Trinity Bring Parent to School Ward Band Orch. Concert 6pm Webster Art & Music 6:30pm IEYMS Gr8 WashDC Trip Title I Family Literacy <i>(Shavuot begins at sunset)</i></p>	<p>19*</p> <p>Barnard 1st Grade Gallery Week Davis Spring Show 10am Ward CILA Orientation Spanish 6:30pm, English 7:30pm NRHS Springfest Vocals 7:30pm SRC Self-Study Policy Brd Board of Ed C. O. W. Meeting (Canvass of Votes) “Our Children, Our Artists” Secondary Schools Art Exhibit Reception @NRPL to 5/27 <i>(*Shavuot first day)</i></p>	<p>20*</p> <p>Davis Field Day Gr1AM/ Gr2 PM Jefferson After School Program Ends Webster Lunch with Principal Gr1 NRHS Spring Dance Concert <i>(*Shavuot second day)</i></p> <p>Trinity Kindergarten Registration</p>	<p>21</p> <p>Davis Field Day Gr4 AM/ Gr3 PM Trinity 21st Century Program Ends NRHS Tri-M Honor Society Induction <i>(Vesak)</i></p>	<p>22</p> <p>Jefferson Tag Sale 10am-4pm</p>	
<p>23</p>	<p>24</p> <p>NYS Gr 4 & 8 Science Performance Tests through 6/3 Barnard Spirit Week Davis Field Day Gr5 all day Jefferson Field Day GrK,1,2 Ward Field Days to 6/4</p>	<p>25</p> <p>NYS Gr 4 & 8 Science Performance Tests Make-ups through 6/3 / NYSESLAT Ends Davis Kindergarten Fun Day AM/ Spring Book Fair to 5/27 ALMS PTA Staff Appreciation Luncheon NRHS Springfest 7:30pm Instrumental Concert SEPTA 7:30pm</p>	<p>26</p> <p>Barnard Field Day Pre-K Trinity Gr3 Field Day IEYMS PTA 7:30pm NRHS Jazz Concert 7:30pm</p>	<p>27</p> <p>Barnard K-2 Field Day Columbus CILA Parent Orientation English-Spanish 6:30pm Davis Kindergarten Fun Day AM 9:30/ PM 1:30 Trinity CILA Orientation 6:30pm/ Gr2 Field Day Ward Field Days to 6/4 NRHS Performing Dance Concert/ GO Carnival OCOA Secondary Schools Art Exhibit @NRPL Ends</p>	<p>28**</p> <p>**Weather Make-Up Day #2 (**See Page 1)</p>	<p>29</p>	
<p>30</p> <p><i>(Pentecost)</i></p>	<p>31</p> <p>Schools & Offices Closed <i>(Memorial Day observed)</i></p>						

*Designated Religious Observance (Reference P. 2)



NEW ROCHELLE SCHOOL DISTRICT TELEPHONE DIRECTORY (914) 576-4300

Teacher Absence 5pm-8:30am 576-4306
BOARD OF EDUCATION - CITY HALL
 21st Century Program Manager 576-4070
 Accounts Payable 576-4243
 Accounting 576-4245
 Accountability & Assessment 576-6780
Assistant Superintendents:
 - Business & Administration 576-4240
 - Business & Admin. FAX 576-5395
 - Curriculum & Instruction 576-4204
 - Curriculum & Instruction FAX 576-4602
 - Instructional Support Services 576-4206
 - Instructional Support Services 576-4233
 - Human Resources 576-4214
 - Human Resources FAX 576-9437
 Assistant Business Administrator 576-4444
Attendance 576-4253
Buildings and Grounds 576-4222
Census 576-4288
Civil Service Personnel 576-4228
Clerk & Secretary 576-4219
Clerk & Secretary FAX 576-4613
Custodian 576-4257
Data Processing 576-4210
Data Processing FAX 576-4294
English Language Learners Inst. 576-8249
FAX (District) 632-4144
Funded Programs Office 576-4234
Health Insurance 576-4254
Health Services 576-4264
Health Services FAX 576-4295
Magnet Office 576-4622
Payroll 576-4245
Personnel - Teacher 576-4213
Personnel - Civil Service 576-4228
Public Information 576-4305
Pupil Services 576-4274
Purchasing 576-4252
Purchasing FAX 576-4218
Risk Management 576-4255
Special Education Office 576-4268
Special Education FAX 576-4295
Superintendent 576-4200
Teacher Absence 5pm-8:30am 576-4306
Technology Director 576-4648
Technology FAX 576-4294
Transportation 576-4230
Treasurer 576-4247
Worker Compensation 576-4255

ADULT EDUCATION 576-4547, 4548

ALBERT LEONARD MIDDLE SCHOOL
 Main Office 576-4339
 Principal 576-4340
 Administrative Dean 576-4319
 Assistant Principal 576-4341
 Audio Visual 576-4312
 Counselors 576-4313, 4315, 4320, 4321
 Custodian 576-4322
 Humanities Chair 576-4334
 Library 576-4326
 Mathematics 576-4327
 Nurse 576-4331, 4325
 Psychologists 576-4311, 4318
 Science 576-4333
 Social Work 576-4310, 8086, 8080
 FAX 576-4784

BARNARD SCHOOL
 Main Office/Principal 576-4386
 Assistant Principal/ Magnet 576-4606
 Pre-K 576-4388
 Nurse 576-4391
 Custodian 576-4387
 Pre-School Speech 576-4390
 PSSLLC FAX 576-4286
 Psychologist 576-4385
 Social Work 576-4394
 FAX 576-4625

CAMPUS SCHOOL 576-4393, 4397
 FAX 576-4647

COLUMBUS ELEMENTARY SCHOOL
 Main Office 576-4400
 Principal 576-4401
 Assistant Principal 576-4402
 Technology Specialist 576-4465
 Math Facilitator 576-4389
 Nurse 576-4410
 Custodian 576-4409
 Psychologist 576-4408
 Social Work 576-4407
 Speech Language 576-4717
 FAX 576-4628

GEORGE M. DAVIS JR. ELEMENTARY
 Main Office/Principal 576-4420
 Assistant Principal 576-4421
 Nurse 576-4422
 Custodian 576-4414
 Magnet 576-4419
 Psychologist 576-4415
 Social Work 576-4416
 FAX 576-4225

ISAAC E. YOUNG MIDDLE SCHOOL
 Main Office/Principal 576-4360
 Administrative Dean 576-4345
 Assistant Principal 576-4379
 Counselors 576-4358, 4365, 4373, 4363
 Custodian 576-4351
 Humanities Chair 576-4376
 Guidance 576-4367
 Library 576-4364
 Mathematics 576-4381
 Nurse 576-4368
 Psychologist 576-4366, 4359
 Science 576-4353
 Social Work 576-4377, 4346
 Special Education 576-1192
 FAX 632-2738

JEFFERSON ELEMENTARY SCHOOL
 Main Office/Principal 576-4430
 Main Office/Assistant Principal 576-4431
 Nurse 576-4429
 Custodian 576-4427
 Psychologist 576-4428
 Social Work 576-4433
 Speech/Language 576-4424
 FAX 576-4631

TRINITY ELEMENTARY SCHOOL
 Main Office/Principal 576-4440
 Main Office/Assistant Principal 576-4441
 Administrative Assistant to Principal 576-4239
 Nurse 576-4663
 Custodian 576-4438
 Psychologist - Part-time 576-4435
 Social Work - Part-time 576-4434
 Speech Language 576-4437
 Technology Specialist 576-4443
 FAX 576-4266

WILLIAM B. WARD ELEMENTARY
 Main Office/Principal 576-4450
 Administrative Assistant to Principal 576-4392
 Assistant Principal 576-4451
 Library 576-4445
 Attendance 576-4452
 Nurse 576-4453, 4473
 Custodian 576-4456
 Psychologist 576-4448, 4454
 Social Work 576-4478, 8023
 Speech Language 576-4396, 4655
 FAX 576-4263



DANIEL WEBSTER ELEMENTARY SCHOOL
 Main Office/Principal 576-4460
 Assistant Principal 576-4680
 Magnet Facilitator 576-4468
 Nurse 576-8411
 Custodian 576-4463
 Library 576-4459
 Psychologist 576-4466
 Social Work 576-4467
 Speech Language 576-4469
 FAX 576-4479

NEW ROCHELLE HIGH SCHOOL
 Main Office 576-4500
 Adult Education 576-4547
 Assistant Principal 576-4504
 Attendance 576-4495
 Band Room 576-4779
 Business 576-4549
 Cafeteria 576-4550
 Chorale Room 576-5635
 Custodian 576-4554
 ESL Coordinator 576-4530
 FAX 576-4284
 Food Service 576-4216
 Foreign Language 576-4559
 Guidance 576-4542
 Guidance FAX 576-4560
 Health Office 576-4575
 Hispanic Liaison Officer 576-4484
 House 1 576-4516
 House 2 576-4525
 House 3 576-4530
 House 4 576-5093
 Language Arts 576-4488
 Learning Disabilities Program 576-4595
 Library 576-4562
 Main Office 576-4500
 Mathematics 576-4564
 Media Center 576-4566
 Model Congress 576-4541
 Nurse 576-4575
 Nurse FAX 632-4232
 Orchestra Room 576-4112
 P.A. V.E. 576-5643
 Physical Education 576-4586
 Planetarium 576-4589
 Principal 576-4502
 Psychologist 576-4539
 Registrar 576-4592
 Science 576-4596
 Social Studies 576-4597
 Social Work 576-4490
 Special Education 576-8292
 Staff Resource Center 576-4593
 Student Assistance 576-4551
 W.I.S.E. 576-4524
 Youth Employment Services 632-9890



June 2010

Sunday Monday Tuesday Wednesday Thursday Friday Saturday

	<p>1 * * **Weather Make-Up Day #1 (**See Page 1)</p>	<p>2 ALMS PTA 7:30pm IEYMS Spring Concert 6:30pm NRHS Best of PAVE 7:30pm (NYS Gr 6-8 Math Make-ups to 6/4)</p>	<p>3 Jefferson Fusion Fair 6pm Trinity Gr1 Field Day NRHS Senior Varsity Awards Banquet</p>	<p>4 Barnard RIF Parent's Principal's Tea/ Pre-K Staff Development CILA Lottery Columbus K Picnic 9:15am Davis Gr5 Tennis Tourn. Trinity Ice Cream Social 6:30pm/ Kinder. Field Day Ward Kind Stepping-Up 10am/ 1:30pm Webster Field Day NRHS PAVE Awards 7:30am/ Musical Theater Class Performances 7pm</p>	<p>5 SAT Ward Carnival 3-7pm Webster Magnet Mile <i>(World Environment Day- www.unep.org/wed)</i></p>	
<p>6</p>	<p>7 NYS Gr 4 & 8 Science Written Tests Ward Kindergarten Punch 10am Webster Field Day rain date NRHS Senior Week / Senior Trip PTA Council Installation Dinner</p>	<p>8 NYS Gr 4 & 8 Science Written Test Make-ups Columbus Field Day Gr1,2,3/ PTA 7pm Trinity Kindergarten Welcome Tea 9:30am NRHS Spring Sports Awards Assembly 3:15pm IEYMS PTA Gr8 Dance ALMS Awards Night 7pm Board of Ed Regular Monthly Meeting</p>	<p>9 NYS Gr 4 & 8 Science Written Test Make-ups Ward PTA 7:30pm IEYMS Dance Night 7pm NRHS Senior Prom</p>	<p>10 Barnard AM Magnet Pre-K Moving Up Columbus Shakespeare Play 7pm Davis PTA Meeting & Breakfast 9:15am Ward Gr5 Club Get Away Webster Kindergarten Welcome 3:30pm NRHS PTSA Inductions 7:30pm</p>	<p>11 Barnard PM Magnet Pre-K Moving Up Columbus Kindergarten New Parent Tea 9:15am Jefferson Kindergarten Stepping Up 9am IEYMS Gr6,7 Field Day/ Gr8 Trip NRHS Senior Awards Assembly 9:30am/ Senior BBQ</p>	<p>12 ACT Barnard Carnival 1-5pm Webster Spring Fundraiser 7:30pm</p>
<p>13</p>	<p>14 NYS Gr8 Social Studies Tests Trinity Flag Day Ceremony Barnard Gr 2 Gallery Week NRHS Senior Awards Ceremony 7:30pm <i>(Flag Day)</i></p>	<p>15 NYS Gr8 Social Studies Tests/ Make-ups Columbus Field Day Gr4,5 Davis Kindergarten Show Jefferson New Parent Welcome Tea 9am Ward Gr5 Celebration 6:30-9pm Webster Gala Gallery Opening/ PTA Exec 7pm IEYMS Awards Ceremony 6:30pm Regents Exams to 6/24</p>	<p>16 NYS Gr8 Social Studies Make-Ups Trinity Gr5 Field Day NRHS Graduation 5pm (rain or shine)</p>	<p>17 NYS Gr8 Social Studies Make-Ups Trinity Gr5 Luncheon 11am/ Gr4 Field Day PTA Council Calendar Meeting 7:30pm</p>	<p>18 Barnard Gr2 Stepping Up Columbus Gr5 Holiday Hill/ Kindergarten Moving Up 10:30am Davis Gr5 Party Jefferson Gr5 Moving Up 10am Trinity Gr5 Award Ceremony 1pm</p>	<p>19 <i>(Juneteenth)</i></p>
<p>20 <i>(Father's Day)</i></p>	<p>21 Barnard AM UPK Moving Up Columbus Gr5 PTA Luncheon Jefferson Parent-Child Picnic 11:40-1:30 Trinity Gr5 Promotion 9am <i>(Summer begins)</i> Regents Exams to 6/24</p>	<p>22 Barnard PM UPK Moving Up Davis Promotion Day 9am Jefferson Summer Book Fair to 6/24 Trinity Kindergarten Moving Up Ward Gr5 Moving Up 10:30am Webster Recognition Assembly 6:30pm/ Garden Party 7pm</p>	<p>23 ELEMENTARY HALF-DAY Barnard PTA End of Year Gathering Columbus Gr5 Promotion 9:15am</p>	<p>24 ELEMENTARY HALF-DAY Webster Promotions 9:30am ALMS Promotions 5pm</p>	<p>25 ELEMENTARY HALF-DAY Last Day of School - Marking Period Ends/ Rating Day Elementary Report Card Distribution IEYMS Promotions 9am Trinity Gr5 Breakfast Ward Gr5 Breakfast Webster Gr5 Breakfast</p>	<p>26</p>
<p>27</p>	<p>28</p>	<p>29 Board of Ed C.O.W.. 7:00pm / Special Meeting 7:30pm</p>	<p>30 NRHS Report Card Distribution 9-11 am, 1-3pm</p>			



July 2010

Sunday Monday Tuesday Wednesday Thursday Friday Saturday

			1 NRHS Report Card Distribution 9-11am, 1-3pm	2	3	
4	5 Independence Day Observance - Offices Closed	6 Board of Education Annual Reorganization Meeting	7	8	9	10
11	12	13	14	15	16	17
18	19	20	21	22	23	24
25 <i>(Asalha Puja, Parents' Day)</i>	26	27 Board of Ed C.O.W.	28	29	30	31



August 2010

CITY SCHOOL DISTRICT OF NEW ROCHELLE • AN AWARD WINNING SCHOOL DISTRICT • WWW.NRED.ORG

Sunday	Monday	Tuesday	Wednesday	Thursday	Friday	Saturday
1	2	3 Board of Ed Regular Monthly Meeting	4	5	6	7
8	9	10	11	12	13	14
15	16	17	18	19	20	21
22	23	24	25	26	27	28 <i>(Ramadan)</i>
29	30	31 Board of Ed C.O.W.	 			

FALL SPORTS PHYSICAL EXAM SCHEDULE

No student can try out for, practice, or compete in an inter-scholastic sport without medical clearance from the Health Services Department. The process includes an Athletic Health History, a physical examination by a school health practitioner or the student's personal physician (in-school exams for Fall sports are conducted in May and June) and an Interval Athletic Health History with updated health information. Both Health History forms and the Physical Examination/Health Appraisal form are posted on the Health Services page of the City School District web site (under "District Resources," click on "Health Services," then "Sports Health Forms").

For **Fall Sports**, the updated Interval Athletic Health History must be submitted in August or September as follows:

ALMS and IEYMS: Students bring their completed form to the school Health Office the first week of school in September.

NRHS: 9th grade students bring their completed form IN PERSON to the Health Office on August 18, 19, 21, 24 from 9 am to 12 Noon. **NRHS 10th, 11th, and 12th** grade students may fax (632-4232), mail, or bring their completed form in person to the Health Office on August 18, 19, 21, 24 from 9 am to 12 Noon.

Football practice begins **August 20** at NRHS. Freshman football begins **August 29**. All other Varsity & JV sports begin **August 22**. Modified sports practice begins **Sept. 9**. For more information, call the Athletic Office at 576-4586.

NOTES

FAMILY EDUCATIONAL RIGHTS AND PRIVACY ACT PROTECTION OF PUPIL RIGHTS AMENDMENT

A. Access to, Correction of and Release of Student Records (Family Educational Rights and Privacy Act)

In accordance with the Family Educational Rights and Privacy Act, the City School District of New Rochelle has adopted a **Student Record Policy** to assure that parents and eligible students¹ have the right to access information contained in the student's records and to assure, further, that parents and eligible students can limit disclosure of certain information from these records. An eligible student is a student who is 18 years old or a legally emancipated minor, in which case the rights described in this notification are transferred from the parent to the student. The rights accorded to parents and eligible students under the School District's policy are set out below:

1. Parents and eligible students have the right to inspect and review the student's education records within 45 days of the day a request for access is made. Requests may be addressed to the Principal of the school the student currently attends, and the Principal will make arrangements for inspection at a specific time and place. Parents and eligible students may also direct such a request to Dr. Diane C. Massimo at the School District's Administrative Office, 515 North Avenue, New Rochelle, New York 10801, (914) 576-4206.
2. The School District will not release information contained in a student's education record without prior written consent of the parent or eligible student, except under those limited circumstances as permitted by the Family Educational Rights and Privacy Act. The School District will release such information without prior notice or consent to school officials who have a legitimate educational interest in obtaining access to them in order to perform their professional responsibilities.² In addition, the School District will forward education records (including student disciplinary records) without prior notice or consent in response to a request received from another school in which a student seeks to enroll.
3. The School District will also release "directory information" without prior written consent. "Directory information" is personally-identifiable information that would not be likely to invade the privacy of a parent or eligible student if disclosed. It includes the student's name and address, dates of attendance, participation in officially recognized activities and sports, diplomas and awards received, the present and the most recent previous educational institutions attended, and photographs or video depicting students at school activities or events. Such directory information may be released (among other forms of release) in school publications, and in media print, electronic and broadcast outlets. The release of "directory information" is subject to the following two limitations:
 - a. In no event will "directory information" be released if the School District determines that the information will be used for commercial or fundraising purposes.
 - b. You may notify the School District that you do not consent to the release of "directory information." To do so, please send the notice in writing to Dr. Diane C. Massimo, Assistant Superintendent – Instructional Support Services, 515 North Avenue, New Rochelle, New York 10801 by **September 19, 2008**. Your request will be effective through this academic year and must be renewed annually.
4. A parent or eligible student may ask the School District to correct (amend) any part of the student's education record which is believed to be inaccurate, misleading or in violation of the student's rights. Such requests should be addressed in the first instance in writing to the Principal of the school the student currently attends, should clearly identify the portion(s) of the record which is requested to be changed, and should specify why the record is believed to be inaccurate, misleading or in violation of the student's rights.
5. In case of disagreement with the School District as to the appropriateness of an education record as to which a correction has been requested, the parent or eligible student will be notified of the School District's decision and of the right to request a hearing by sending a written request to the School District addressed to Dr. Diane C. Massimo, Assistant Superintendent – Instructional Support Services, 515 North Avenue, New Rochelle, New York 10801. Upon receipt of such a request, the School District will furnish additional information regarding the hearing procedures.
6. A parent or eligible student may also file a complaint with the United States Department of Education if he or she believes that the School District has violated the Family Educational Rights and Privacy Act with respect to his or her record. Complaints should be addressed as follows: Family Policy Compliance Office, U.S. Department of Education, 400 Maryland Avenue, S.W.; Washington, D.C. 20202-4605
7. Please note that school systems periodically receive requests from the United States Armed Forces, pursuant to the "No Child Left Behind Act of 2001," for the names, addresses and telephone numbers of 11th and 12th grade students so that branches of the military can send students information about education, technical training and financial benefits available upon enlistment in the military. The School District will provide such information in response to such requests unless the parent or eligible student withholds consent to such release. To withhold consent, please send a notice to that effect in writing to Dr. Diane C. Massimo, Assistant Superintendent – Instructional Support Services, 515 North Avenue, New Rochelle, New York 10801, by **September 18, 2009**. Your request will be effective through this academic year and must be renewed annually. In addition, please be advised that the School District is required by law to give military recruiters the same access to secondary school students as is provided to postsecondary institutions and prospective employers.

B. Utilization of and Consent to Surveys and Examinations or Screenings

Administered to Students (Protection of Pupil Rights Amendment)

It is long-standing School District policy that questionnaires, surveys and physical examinations and/or screenings are not administered to students without prior notice to parents, and with an opportunity to parents and eligible students to grant or withhold consent to such administration. Notwithstanding, the School District is required by federal law to inform parents and eligible students about the requirements applicable to all public school systems with regard to such activities, and also with respect to certain physical examinations and/or screenings.

1. Parents and eligible students are entitled to notice and the opportunity either to consent or "opt out"³ of any survey (and, upon request to inspect any such survey instrument) of participation by a student which includes any of the following eight areas of "protected information":
 - The political affiliations or beliefs of the student or the student's parent(s);
 - Mental or psychological problems of the student or of the student's family;
 - Sex behavior or attitudes;
 - Illegal, anti-social, self-incriminating or demeaning behavior;
 - Critical appraisals of others with whom survey subjects have close family relationships;
 - Legally-recognized privileged relationships, such as with lawyers, doctors or religious leaders (ministers, rabbis, priests, imams, and similar persons);
 - The religious practices, affiliations or beliefs of the student or the student's parent(s); and
 - Income information, other than as may be required to determine eligibility for a School District or other public program.
2. Parents and eligible students have the rights (a) to inspect upon request, and (b) to "opt out" of participation by a student in a survey which collects "personal information" (including such items as a student's or parent's first and last name, address, telephone number or Social Security number), if such information will be used for marketing or selling the information so collected, or will be provided to others for that purpose. However, these inspection and "opt-out" rights do *not* apply to the collection, disclosure or use of "personal information" from students for the exclusive purpose of developing, evaluating or providing educational products or services for or to students or educational institutions.⁵
3. Parents and eligible students have the rights (a) to be notified of, and (b) to "opt out" of any non-emergency, invasive physical examination or screening which is: (i) required as a condition of school attendance, (ii) administered by a public school and scheduled by the school in advance, and (iii) is not necessary to protect the immediate health and safety of the student, or of other students. However, this "opt-out" right does *not* apply to physical examinations⁶ or screenings which are required or permitted by New York State law, such as mandatory vaccinations and regular physical examinations of students.
4. Parents and eligible students are entitled to inspect, upon request and before administration or use, (a) protected information surveys of students; (b) instruments used to collect personal information from students for marketing, sales, or other distribution purposes as described above; and (c) instructional material used as part of the educational curriculum.
5. A parent or eligible student may also file a complaint with the United States Department of Education if he or she believes that the School District has violated the Protection of Pupil Rights Amendment with respect to him or her. Complaints should be addressed as follows: Family Policy Compliance Office, U.S. Department of Education, 400 Maryland Avenue, S.W., Washington, D.C. 20202-4605

¹ An "eligible student" is a student or former student who has reached the age of eighteen or is attending a post-secondary school

² A "school official" is a person employed by the School District as an administrator, supervisor, instructor, or support staff member; a person serving on the Board of Education; a person or entity with whom the School District has contracted to perform a special task (such as an attorney, auditor, medical consultant or therapist); a parent or student serving on an official committee (such as a disciplinary or grievance committee, or a Committee on Special Education); and a person assisting another school official in performing his or her responsibilities.

³ If the survey is funded in whole or in part by the United States Department of Education, then consent must be obtained before a student is required to submit to a survey. Even if the survey is not so funded, notice of the survey and an opportunity to opt out of participation must be provided.

⁴ Federal law makes a distinction between surveys of "protected information" which are funded in whole or in part by the United States Department of Education (in which case the prior consent of parents and eligible students must be obtained) and surveys of "protected information" which are funded from other sources (in which case an "opt-out" opportunity must be provided).

⁵ This exception includes the following types of uses: disclosure to colleges, post-secondary educational institutions and military recruiters; book clubs, magazines and programs providing access to low-cost literacy products; curriculum and instructional materials used by elementary or secondary schools; tests and assessments used by elementary or secondary schools to provide cognitive, evaluative, diagnostic, clinical, aptitude or achievement information about students; the sale by students or products or services to raise funds for school-related or education-related activities; and student recognition programs.

⁶ An "invasive physical examination" is a medical examination which involves the exposure of private body parts, or which includes an incision, insertion or injection into the body. Hearing, vision and scoliosis screening is not considered to be "invasive."

Certain designated records of the City School District of New Rochelle are available for inspection and copying as provided by law and following procedures. For records access, contact the designated Records Access Officer: District Clerk, City School District of New Rochelle, Administration Building, 515 North Avenue, New Rochelle, N.Y. 10801.

Dear Parent/Guardian:

Children need healthy meals to learn. The City School District of New Rochelle offers healthy meals every school day. We invite all students to show their support for their school food service program through frequent participation.

Elementary school students may buy the full price breakfast for \$1.25 and/or the full price lunch for \$2.25. Albert Leonard and Isaac E. Young Middle School students may buy the full price breakfast for \$1.25 and/or the full price lunch for \$2.50. New Rochelle High School students may buy the full price breakfast for \$1.50 and/or the full price lunch for \$2.75.

Children from households that meet Federal income guidelines (outlined on the next page) are eligible for free meals or reduced price meals. Reduced price meals cost each eligible student \$.25 for lunch and \$.25 for breakfast. To apply for free or reduced price meals, submit a Direct Certification letter from the NYS Office of Temporary and Disability Assistance OR complete the enclosed application, sign it, and return it to the school as soon as possible. Please refer to the guidelines contained in this letter when completing the application. We cannot approve an application that is not complete, so be sure to fill out all required information.

1. Do I need to fill out an application for each child? No. Complete the application to apply for free or reduced price meals. Do not fill out more than one application for your household.
2. Who can get free meals? Children in households getting Food Stamps or TANF and most foster children can get free meals regardless of your income. Also, your children can get free meals if your household income is within the free limits on the Federal Income Guidelines. Each foster child must be listed on a separate application, with Part 2 completed and include an adult signature.
3. Can homeless, runaway and migrant children get free meals? Please call your homeless liaison or migrant coordinator to see if your child(ren) qualify, if you have not been informed that they will get free meals.
4. Who can get reduced price meals? Your children can get low cost meals if your household income is within the reduced price limits on the Federal Income Chart, shown on this application.
5. Should I fill out an application if I received a letter this school year saying my children are approved for free or reduced price meals? Please read the letter you received carefully and follow the instructions. Call the Food Service office at 576-4216 if you have any questions.
6. I get WIC, can my child(ren) get free meals? Children in households participating in WIC may be eligible for free or reduced price meals. Please fill out an application.
7. Will the information I give be checked? The school may ask you at any time during the school year to verify your eligibility. You will be notified, in writing, if you have been selected for Verification. School officials may ask you to send papers showing that your child should receive free or reduce price meals at the time you applied.
8. If I don't qualify now, may I apply later? Yes. You may apply at any time during the school year if your household size goes up, income goes down, or if you start getting Food Stamps, TANF or other benefits. If you lose your job, your children may be able to get free or reduced price meals.
9. What if I disagree with the school's decision about my application? You should talk to school officials. You also may ask for a hearing by calling or writing to: New Rochelle Food Services, 265 Clove Road, New Rochelle, NY 10801, 576-4216.
10. May I apply if someone in my household is not a U.S. citizen? Yes. You or your child(ren) do not have to be a U.S. citizen to qualify for free or reduced price meals.
11. Who should I include as members of my household? You must include all people living in your household, related or not (such as grandparents, other relatives, or friends). You must include yourself and all children who live with you.
12. What if my income is not always the same? List the amount that you normally get. For example, if you normally get \$1000 each month, but you missed some work last month and only got \$900, put down that you get \$1000 per month. If you normally get overtime, include it, but not if you get it only sometimes.

How to Apply: To get free or reduced price meals for your children you may submit a Direct Certification letter received from the NYS Office of Temporary and Disability Assistance, OR carefully complete one application for your household and return it to the designated office. If you now receive food stamps, Temporary Assistance to Needy Families (TANF) for any children, or participate in the Food Distribution Program on Indian Reservations (FDPIR), the application must include the children's names, the household food stamp, TANF or FDPIR number and the signature of an adult household member. All children with the same case number may be listed on the same application. Separate applications are required for children with different case numbers. If you do not list a food stamp, TANF or FDPIR number for all the children for whom you are applying, the application must include the names of everyone in the household, the amount of income each household member, and how often it is received and where it comes from. It must include the signature of an household member and that adult's social security number, or the word "none" if the adult does not have a social security number. An application that is not complete cannot be approved. Contact your local Department of Social Services for your food stamp or TANF number or complete the income portion of the application.

Reporting Changes: The benefits that you are approved for at the time of application are effective for the entire school year. You no longer need to report changes for an increase in income or decrease in household size, or if you no longer receive food stamps.

Income Exclusions: The value of any child care provided or arranged, or any amount received as payment for such child care or reimbursement for costs incurred for such care under the Child Care Development (Block Grant) Fund should not be considered as income for this program.

Non-discrimination Statement: In accordance with the Federal law and U.S Department of Agriculture policy, this institution is prohibited from discriminating on the basis of race, color, national origin, sex, age, or disability. To file a complaint of discrimination, write to USDA, Director, Office of Civil Rights, 1400 Independence Avenue, SW, Washington DC 20250-9410 or call 800-795-3272 or 202 720-6382 (TTY).

Meal Service to Children With Disabilities: Federal regulations require schools and institutions to serve meals at no extra charge to children with a disability, which may restrict their diet. A student with a disability is defined in 7CFR Part 15b.3 of Federal regulations, as one who has "...a physical or mental impairment which substantially limits one or more major life activities...". Major life activities are defined to include functions such as caring for one's self, performing manual tasks, walking, seeing, hearing, speaking, breathing, learning, and working. You must request the special meals from the school and provide the school with medical certification from a medical doctor. If you believe your child needs substitutions because of a disability, please get in touch with us for further information that the medical certification must contain.

Confidentiality: The United States Department of Agriculture has approved the release of students' names and eligibility status, without parent/guardian consent, to persons directly connected with the administration or enforcement of federal education programs such as Title I and the National Assessment of Educational Progress (NAEP), which are United States Department of Education programs used to determine areas such as the allocation of funds to schools, to evaluate socioeconomic status of the school's attendance area, and to assess educational progress. Information may also be released to State health or State education programs administered by the State agency or local education agency, provided the State or local education agency administers the program, and federal State or local nutrition programs similar to the National School Lunch Program. Additionally, all information contained in the free and reduced price application may be released to persons directly connected with the administration or enforcement of programs authorized under the National School Lunch Act (NSLA) or Child Nutrition Act (CNA) including the National School Lunch and School Breakfast Programs, the Special Milk Program, for Women Infants and Children (WIC); the Comptroller General of the United States for audit purposes, and federal, State or local law enforcement officials investigating alleged violation of the programs under the NSLA or CNA.

The disclosure of eligibility information not specifically authorized by the NSLA requires a written consent statement from the parent/guardian.

Applications must be submitted by *September 18, 2009*. We will let you know when your application is approved or denied.

Income Chart: The following chart lists income levels according to household size and income levels received either yearly, monthly or weekly. If your total household income is the same or less than the amounts on the Income Chart below, your children can get reduced price meals, and may be eligible to receive free meals.

Household Size	REDUCED PRICE ELIGIBILITY INCOME CHART				
	Annual	Month	Twice Per Month	Every Two Weeks	Weekly
1	\$ 20,036	\$ 1,670	\$ 835	\$ 771	\$ 386
2	26,955	2,247	1,124	1,037	519
3	33,874	2,823	1,412	1,303	652
4	40,793	3,400	1,700	1,569	785
5	47,712	3,976	1,988	1,836	918
6	54,631	4,553	2,277	2,102	1,051
7	61,550	5,130	2,565	2,368	1,184
8	68,469	5,706	2,853	2,634	1,317
For each additional family member add	+6,919	+577	+289	+267	+134

Sincerely,
 Richard E. Organisciak
 Superintendent of Schools

APPLICATION INSTRUCTIONS

To apply for free and reduced price meals, submit a Direct Certification letter received from the Office of Temporary and Disability Assistance OR complete this application using the instructions for your household. Sign the application and return the application to the school. Please complete a separate application for each foster child. Call the school if you need help: 576-4217. Ensure that all information is provided. Failure to do so may result in denial or unnecessary delay in approving your application.

PART 1	ALL HOUSEHOLDS MUST COMPLETE STUDENT INFORMATION. Do NOT fill out more than one application for your household. (1) Print the names of the children for whom you are applying on one application. (For Foster Children, see Part 2.) (2) List their grade and school.
PART 2	HOUSEHOLDS WITH A FOSTER CHILD SHOULD COMPLETE THIS PART AND PART 6. A foster child is the legal responsibility of a welfare agency or court. A separate application must be completed for each foster child. (1) List the foster child's monthly "personal use" income. ("Personal Use" income is money given by the welfare office identified by category for the child's personal use, such as an allowance, and all other money the child gets, such as money from his/her family or money from the child's employment.) Write "0" if the foster child does not get "personal use" income. SKIP PART 4. Do not list any other children, household members or income, or a social security number. (2) A foster parent or other official representing the child must sign the application in PART 5.
PART 3	HOUSEHOLDS GETTING FOOD STAMPS, ADC/TANF OR FDPIR SHOULD COMPLETE THIS PART AND PART 6. (1) List a current food stamp case number, ADC/TANF or FDPIR number. Complete a separate application for a child/children with a different case number. (2) An adult household member must sign the application in PART 5. SKIP PART 4. Do not list names of household members or income if you list a food stamp case number, ADC/TANF or FDPIR number.
PARTS 4 & 5	ALL OTHER HOUSEHOLDS MUST COMPLETE THESE PARTS AND PART 6. (1) Write the names of everyone in your household, whether or not they get income. Include yourself, the children you are applying for, all other children, your spouse, grandparents, and other related and unrelated people in your household. Use another piece of paper if you need more space. (2) Write the amount of income each household member got last month, before taxes or anything else is taken out, and indicate where it came from, such as earnings, welfare, pensions and other income. If any amount last month was more or less than usual, write that person's usual monthly income. Specify how often this income amount is received: weekly, bi-weekly, monthly, 2X per month. (3) The value of any child care provided or arranged, or any amount received as payment for such child care or reimbursement for costs incurred for such care under the Child Care and Development Block Grant, TANF and At Risk Child Care Programs should not be considered as income for this program. (4) The application must include the social security number of the adult who signs Part 5 if Part 4 is completed. If the adult does not have a social security number, write "none". If you listed a food stamp, ADC TANF or FDPIR number, or if you are applying for a foster child, a social security number if not needed.
PART 6	ALL APPLICATIONS MUST HAVE THE SIGNATURE OF AN ADULT HOUSEHOLD MEMBER. When a social security number is given, it must belong to the adult who signs the application in this part.

OTHER BENEFITS: Your child may be eligible for benefits such as Medicaid or Children's Health Insurance Program (CHIP). In order to determine if your child is eligible, program officials need information from your free and reduced price meal application. Your written consent if required before any information may be released. Please refer to the attached parent Disclosure Letter and Consent Statement for information about other benefits.

PRIVACY ACT STATEMENT

Section 9 of the National School Lunch Act requires that unless your children's food stamp, ADC/TANF or FDPIR case number is provided, you must include the social security number of the adult household member signing the application, or indicate that the household member does not have a social security number. If a social security number is not given or an indication is not made that the signer does not have such a number, the application cannot be approved. The social security number may be used to identify the household member in carrying out efforts to verify the correctness of information stated on the application. These verification efforts may be carried out through program reviews, audits and investigations and may include contacting employers to determine income, contacting a food stamp or welfare office to determine current certification for receipt of food stamps or other benefits, contacting the State employment security office to determine the amount of benefits received and checking the documentation produced by household members to prove the amount of income received. These efforts may result in a loss or reduction of benefits, administrative claims, or legal actions if incorrect information is reported.

DISCRIMINATION COMPLAINTS

Program benefits and services are available to all children without regard to race, color, gender or sexual orientation, disability, age or national origin. To file a complaint of discrimination, write to USDA, Director, Office of Civil Rights, 1400 Independence Avenue, SW, Washington, D.C. 20250-9410, or call 800-795-3272 or 202-720-6382 (TTY).

APPLICATION FOR FREE AND REDUCED PRICE SCHOOL MEALS/MILK

To apply for free and reduced price meals for your children, read the instructions on the back, complete this form, sign your name and return it to the school.

Complete a separate application for each foster child. Call 576-4216 if you need help.

1. STUDENT INFORMATION:

Children's Names (Last, First MI)	Grade/Teacher	School

2. FOSTER CHILD: If the above named child is the legal responsibility of a welfare agency or court, check this box.

List the child's personal use income: _____ (Write "0" if the child has no personal use income.) Skip to Part 5.

3. HOUSEHOLDS GETTING FOOD STAMPS OR AID TO DEPENDENT CHILDREN (ADC)/TEMPORARY ASSISTANCE TO NEEDY FAMILIES (TANF): Complete this section and sign the application in Part 5 **OR** submit a Direct Certification letter from the Office of Temporary and Disability Assistance. Complete a separate application for children with a different case number or no case number. Write your case number as provided on your benefit letter, **not the number on your benefit card.**

Food Stamp #: _____ ADC/TANF #: _____

4. HOUSEHOLD MEMBERS & MONTHLY INCOME: If you did not give a food stamp or ADC/TANF number, or submit a Direct Certification letter, complete this part and Part 5.

Show how often each amount is received. See Examples	CURRENT INCOME/ PAY PERIOD				Check if NO Income
List the Names of Everyone in Your Household	Earnings From Work Before Deductions	Welfare, Child Support, Alimony, Etc.	Pensions, Retirement, Social Security	Other Income	
	Examples: \$100/weekly, \$100/ bi-weekly, \$100/2X per month, \$100/monthly				
	If pay period is not noted, the reviewing official will process the reported income amount as received WEEKLY.				
(Example) Jane Smith	\$200/weekly	\$150/weekly	\$100/monthly		
1. _____	Amount/ How Often \$ ____/____	Amount/ How Often \$ ____/____	Amount/ How Often \$ ____/____	Amount/ How Often \$ ____/____	<input type="checkbox"/>
2. _____	\$ ____/____	\$ ____/____	\$ ____/____	\$ ____/____	<input type="checkbox"/>
3. _____	\$ ____/____	\$ ____/____	\$ ____/____	\$ ____/____	<input type="checkbox"/>
4. _____	\$ ____/____	\$ ____/____	\$ ____/____	\$ ____/____	<input type="checkbox"/>
5. _____	\$ ____/____	\$ ____/____	\$ ____/____	\$ ____/____	<input type="checkbox"/>
6. _____	\$ ____/____	\$ ____/____	\$ ____/____	\$ ____/____	<input type="checkbox"/>
7. _____	\$ ____/____	\$ ____/____	\$ ____/____	\$ ____/____	<input type="checkbox"/>

5. SIGNATURE: An adult household member **MUST** sign the application before it can be approved.

I certify that all of the above information is true and that all income is reported. I understand that the information is being given for the school to receive federal funds; that school officials may verify the information and that deliberate misrepresentation of the information may subject me to prosecution under applicable State and federal laws, and my children may lose meal benefits.

SIGNATURE OF ADULT: _____ **DATE SIGNED:** _____ **Social Security #** ____ - ____ - ____

Home Telephone _____ Work Telephone _____ Mailing Address _____ Zip Code _____

SOCIAL SECURITY NUMBER: If Part 4 is completed, the adult who signs the application **must** provide his/her Social Security number.

DO NOT WRITE BELOW THIS LINE - FOR SCHOOL USE ONLY

MONTHLY INCOME CONVERSION: WEEKLY X 52; EVERY 2 WEEKS X 26; TWICE A MONTH X 24; MONTHLY X 12

FOOD STAMP, ADC TANF, Foster Child Date Withdrawn _____

INCOME HOUSEHOLD: Total Household Monthly Income/Frequency: _____ / _____ Household Size: _____

Application APPROVED for: Free Meals Reduced Price Meals
 Temporary Free (Expires in 45 days) ____/____/____ Application DENIED

Date Notice Sent: _____ Signature of Reviewing Official: _____ Date: _____

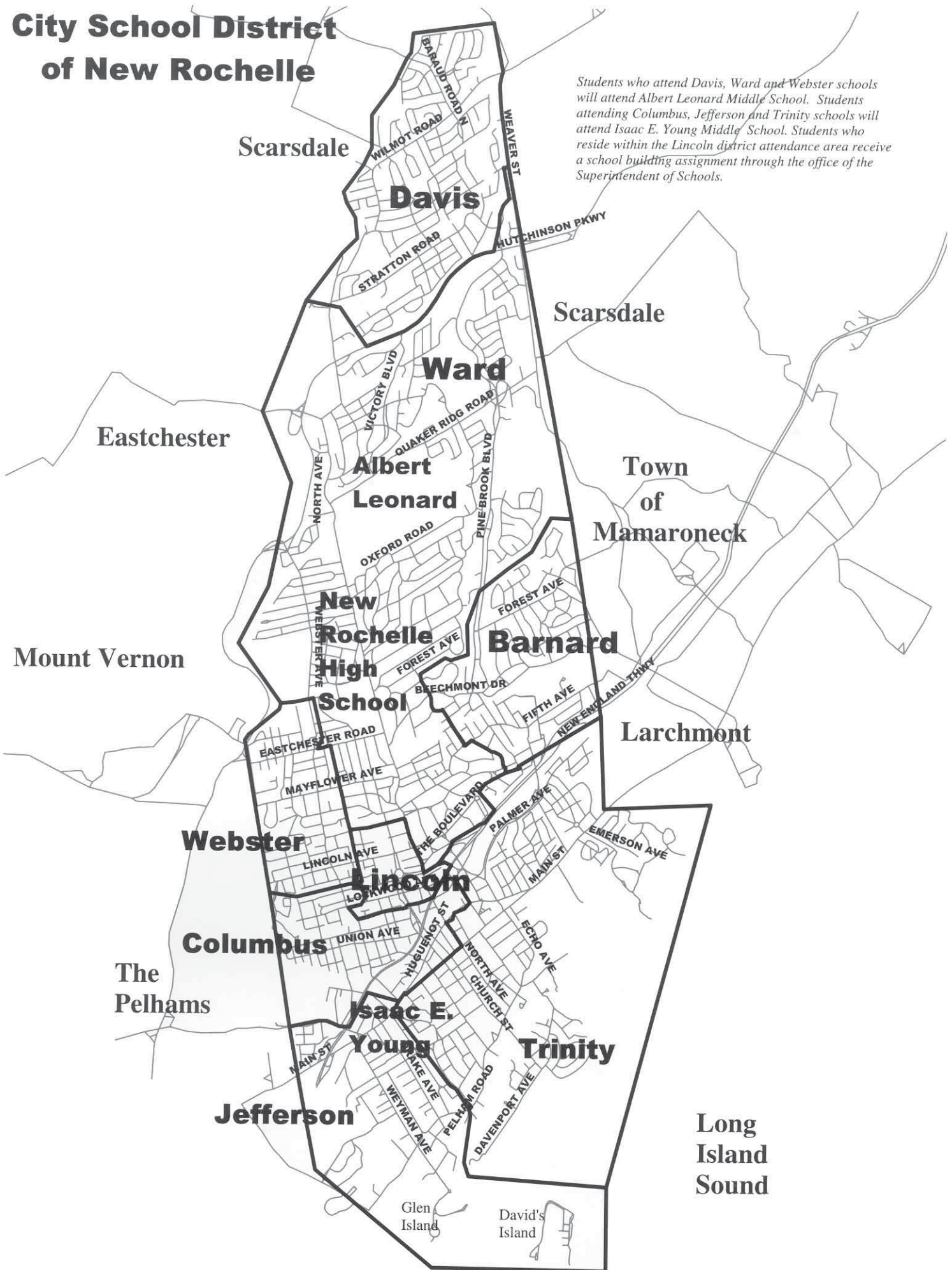
Clip and submit

Clip and submit

Clip and submit

City School District of New Rochelle

Students who attend Davis, Ward and Webster schools will attend Albert Leonard Middle School. Students attending Columbus, Jefferson and Trinity schools will attend Isaac E. Young Middle School. Students who reside within the Lincoln district attendance area receive a school building assignment through the office of the Superintendent of Schools.



*Award Winning School District:
Elementary—Secondary School Recognition Program
United States Department of Education
New York State Department of Education*

District web site: www.NRED.org

City School District Of New Rochelle

515 North Avenue New Rochelle NY 10801-3416

Non-Profit
Organization
U.S. Postage
PAID
White Plains NY
Permit No. 1334

SCHOOL MEAL PROGRAM APPLICATION INSIDE - P. 28

